

STATE OF CALIFORNIA - DEPARTMENT OF TRANSPORTATION
Caltrans
 CONSULTANT FUNCTIONAL SUPERVISOR: SANG KIM
 CALCULATED/DESIGNED BY: HADEEL RADAYDEH
 CHECKED BY: KEVIN KRAMER
 REVISED BY: .
 DATE REVISED: .

NOTE:
 FOR ACCURATE RIGHT OF WAY DATA, CONTACT
 RIGHT OF WAY ENGINEERING AT THE DISTRICT OFFICE.

Dist	COUNTY	ROUTE	POST MILES TOTAL PROJECT	SHEET No.	TOTAL SHEETS
04	SM	1	27.5/34.8	-	-

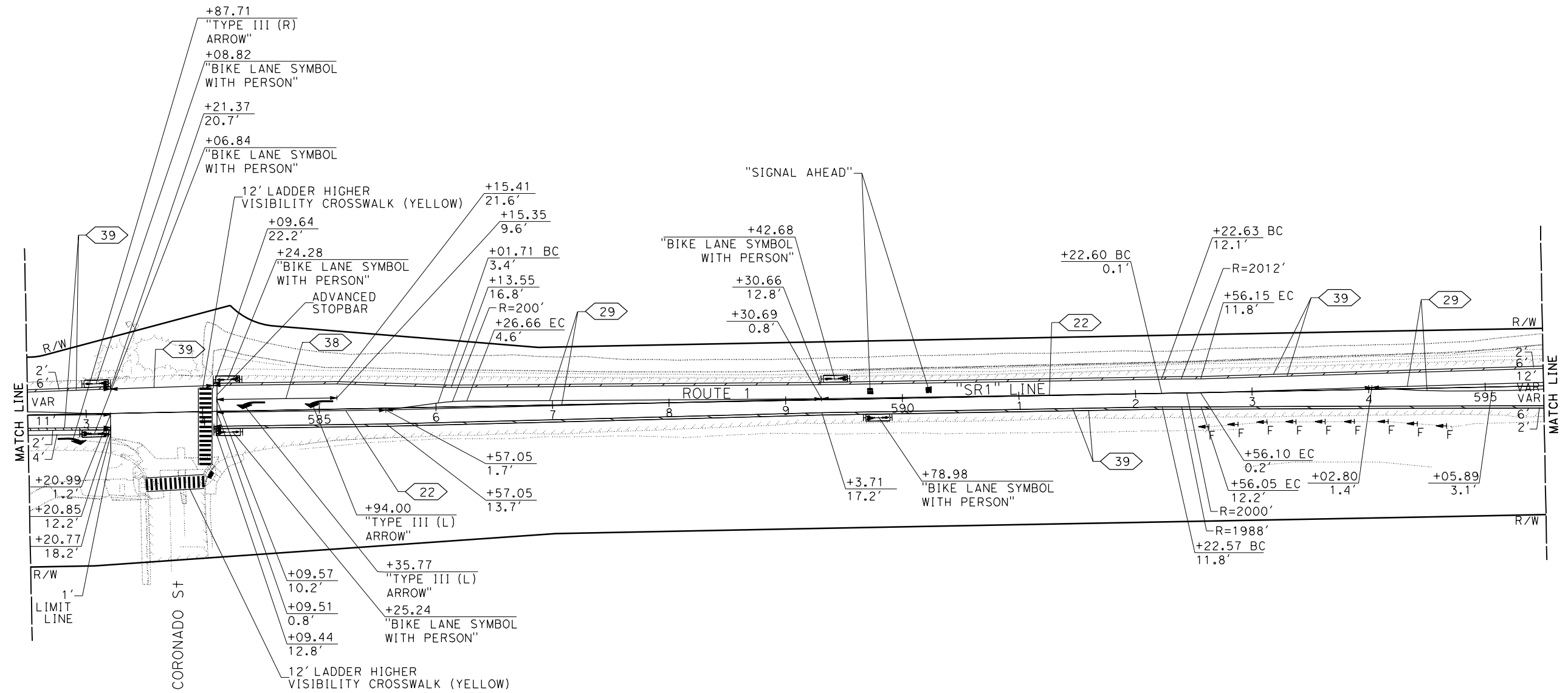
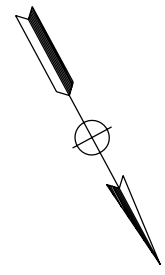
REGISTERED CIVIL ENGINEER DATE _____
 Sang Kim
 No. C66289
 Exp 06-30-24
 CIVIL
 STATE OF CALIFORNIA

PLANS APPROVAL DATE _____

THE STATE OF CALIFORNIA OR ITS OFFICERS OR AGENTS SHALL NOT BE RESPONSIBLE FOR THE ACCURACY OR COMPLETENESS OF SCANNED COPIES OF THIS PLAN SHEET.

AECOM
 4 N. SECOND STREET,
 SUITE 675
 SAN JOSE, CA 95113-2254

CALTRANS
 111 GRAND AVENUE
 OAKLAND, CA 94612



FOR NOTES, AND LEGEND,
 SEE SHEET PD-1

PAVEMENT DELINEATION PLAN
 SCALE: 1" = 50'

PD-19

LAST REVISION DATE PLOTTED => 01-NOV-2023 10-27-23 TIME PLOTTED => 15:38

STATE OF CALIFORNIA - DEPARTMENT OF TRANSPORTATION
Caltrans
 FUNCTIONAL SUPERVISOR
 CALCULATED-DESIGNED BY
 CHECKED BY
 REVISED BY
 DATE
 REVISED
 DATE

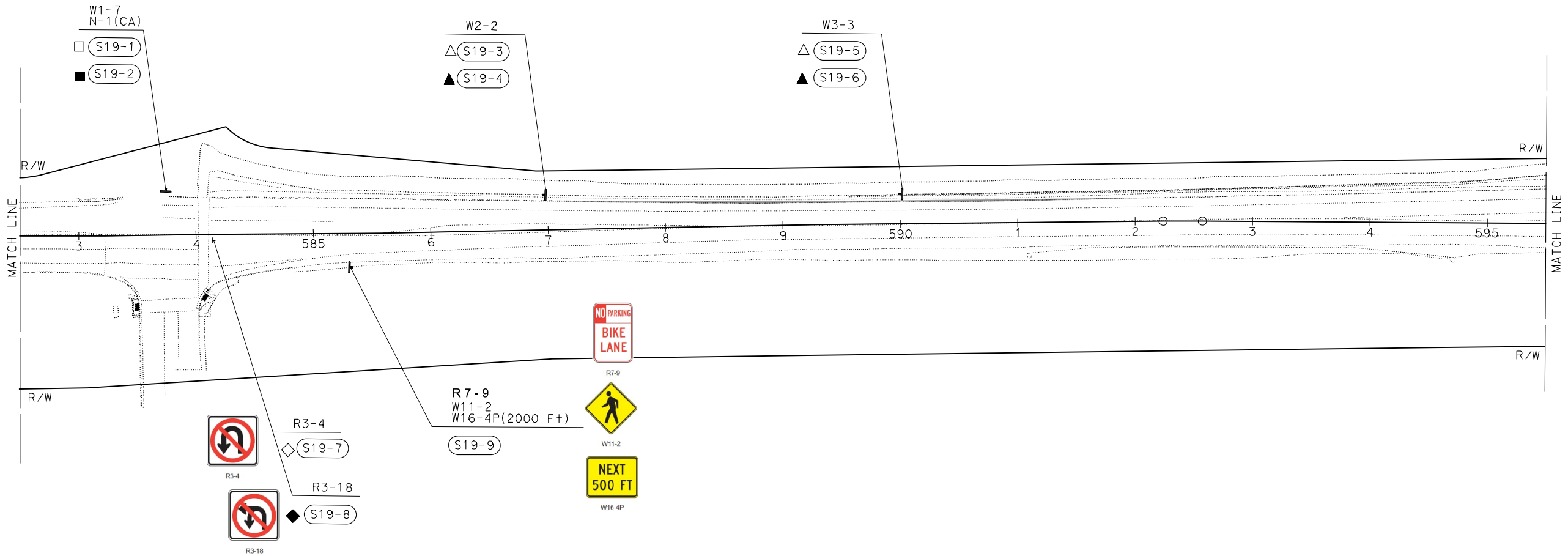
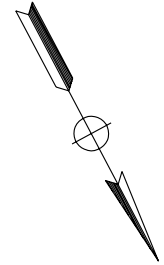
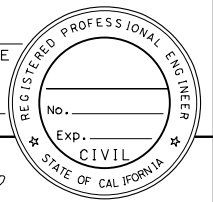
NOTE:
 FOR ACCURATE RIGHT OF WAY DATA, CONTACT
 RIGHT OF WAY ENGINEERING AT THE DISTRICT OFFICE.

Dist	COUNTY	ROUTE	POST MILES TOTAL PROJECT	SHEET No.	TOTAL SHEETS

REGISTERED CIVIL ENGINEER DATE _____

PLANS APPROVAL DATE _____

THE STATE OF CALIFORNIA OR ITS OFFICERS OR AGENTS SHALL NOT BE RESPONSIBLE FOR THE ACCURACY OR COMPLETENESS OF SCANNED COPIES OF THIS PLAN SHEET.



SIGN PLAN
 NO SCALE

APPROVED FOR SIGN WORK ONLY

FOR NOTES, ABBREVIATIONS AND LEGEND, SEE SHEET S-1

S-19