

# Moss Beach Fire Station 44

Remodel Plan Review

Guests Austin Duncklee, Architect PBK Consulting and CFPD Chief Gary Silva



Current design for 9,549 square ft.  
The perimeter to be surrounded by chain link fence.

A sliding security gate at the north end of the property will be installed  
Highest point on roof to be 32 ft 3in  
Fuel tank and Generator to move from the north side of the property to the backside on the south end of the property.

3D renderings do not show lighting, fencing or gate. Please refer to blue prints.



**FS 44 - Space Program Comparison 4/12/2023**

Area	Station 41	SVA Program	FS 44 (concept)	Notes
------	------------	-------------	-----------------	-------

**General Site**

Public Parking	3	3 (1,600 SF)	3 (1,600 SF)	Note
Staff Parking	14	8 (3,200 SF)	8 (3,200 SF)	Note
Generator Area		300 SF	378 SF	Note
Trash Enclosure		180 SF	50 SF	Note
Apparatus Apron / Wash Down	2	(7,200 SF)	2 (16 x 33 SF)	Note
Fire Hydrants	2		TBD	Note
Entry Plaza		200 SF	323 SF	Note
Fuel Island		375 SF	217 SF	Note
Comm. Bldg.		375 SF	287 SF	Note
Emergency Phone	1		TBD	Note
<b>TOTAL</b>		<b>13,440 SF</b>	<b>XXX SF</b>	Note

**Apparatus Bay & Support Spaces**

Apparatus Bay	4491 SF	3200 SF	3200 SF	Note
Tool / Util. Shop	333 SF	180 SF	145 SF	Note
Mech. Room	196 SF	150 SF	70 SF	Note
Stor. Mezzanine	211 SF	810 SF	TBD	Note
Turn-out & Gear Laundry	376 SF	368 SF	395 SF	Note
Toilet / Decon	226 SF	42 SF	110 SF	Note
Hose & Equip. Stor.	121 SF	96 SF	80 SF	Note
EMS stor.		100 SF	160 SF	Note
<b>TOTAL</b>	<b>5,954 SF</b>	<b>4,946 SF</b>	<b>SEE BELOW</b>	Note

**Fire House & Living Areas**

Dining Area	284 SF	225 SF	225 SF	Note
Kitchen	494 SF	225 SF	257 SF	Note

preferred to be on right hand side if possible

reduce in size to allow more space for shop

Area	Station 41	SVA Program	FS 44 (concept)	Notes
Food Pantry	NA	64 SF	102 SF	Note
Day Room	536 SF	300 SF	305 SF	Note
Batallion Chief / Captain Suite	(2) X 143 SF	(2) X 351 SF	310 / 335 SF	Note
Outdoor Patio & BBQ Area	400 SF	225 SF	220 SF	Note
Firefighter Dorm Rooms	(7) x 180 SF	(4) X 180 SF	(4) x 160 SF	Note
<b>TOTAL</b>	<b>2,360 SF</b>	<b>2,461 SF</b>	<b>SEE BELOW</b>	Note

**Office & Support Spaces**

Lobby	326 SF	186 SF	165 SF	Note
Accessible Restroom	(2) X 74 SF	(2) X 64 SF	56 SF	Note
Station Office	NA	180 SF	190 SF	Note
IDF / Comm.	84 SF	64 SF	53 SF	Note
Main Electrical Room	182 SF	96 SF	80 SF	Note
Storage Closet	50 SF	49 SF	NA	Note
Laundry / Jan.	146 SF	80 SF	59 SF (split)	Note
Exercise	532 SF	480 SF	468 SF	Note
Community Room / Class Rm.	598 SF	900 SF	777 SF	Note
Dedicated Storage	50 SF	80 SF	101 SF	Note
Riser Room	17 SF	48 SF	40 SF	Note
<b>TOTAL</b>	<b>2,133 SF</b>	<b>2,291 SF</b>	<b>SEE BELOW</b>	Note

<b>FIRST FLOOR TOTAL</b>			7,077 SF	Note
<b>SECOND FLOOR TOTAL</b>			3,112 SF	Note
<b>OVERALL TOTAL</b>	<b>12,425 SF</b>	<b>11,258 SF</b>	10,189 SF	Note
<b>SITE TOTAL</b>			21,695 SF	Note

10' ceiling is preferred

to be revised to accommodate 10-12 person conference room

# Public Meeting for Proposed New Station 44 8/8/23

According to an article in the Half Moon Bay Review 8/16/23 by August Howell

Austin Duncklee, PBK Architects presented a design for the new station that would expand the footprint from about 4,000 to 7,000.

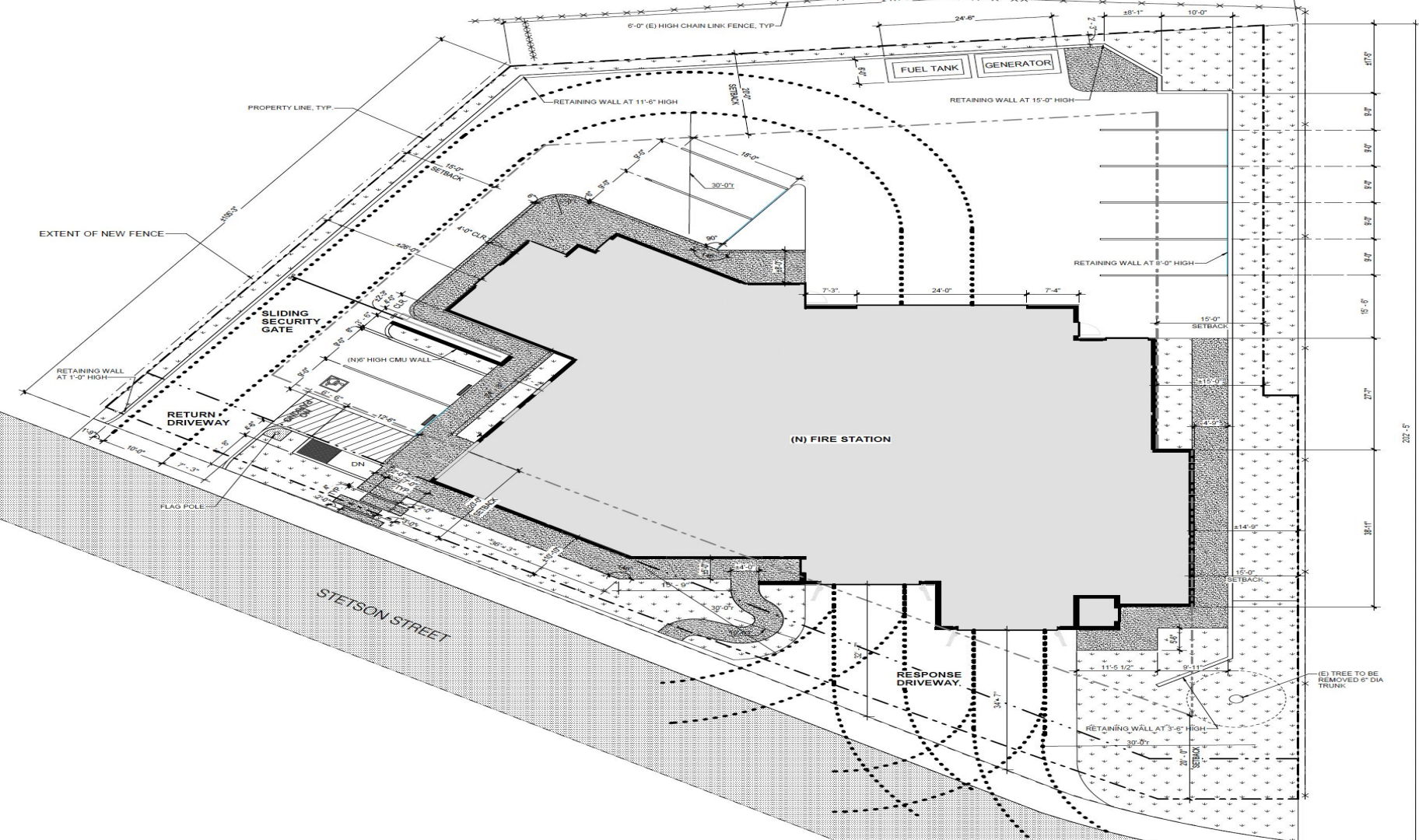
Building height 26 ft at its zenith

Priorities to minimize light pollution, protect existing views and retain stormwater runoff.

New feature drive through apparatus bay. New fans installed in an attic which will be less noisy.

Public expressed concerns about lighting plan due to being in a residential neighborhood.

Three firefighters will occupy building at each shift.





498 Stetson St

4 years ago · [See more dates](#) >



506 Sierra St

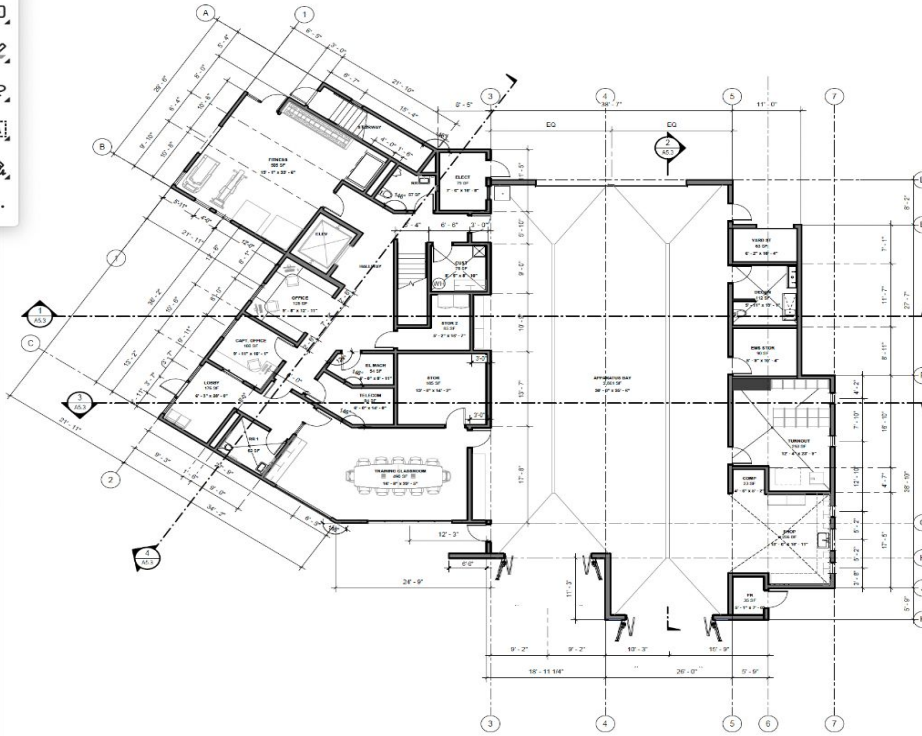
4 years ago · [See more dates](#) >

	in decibels)	or repeated exposure)
Softest sound that can be heard	0	
Normal breathing	10	Sounds at these dB levels typically don't cause any hearing damage.
Ticking watch	20	
Soft whisper	30	
Refrigerator hum	40	
Normal conversation, air conditioner	60	
Washing machine, dishwasher	70	You may feel annoyed by the noise
City traffic (inside the car)	80-85	You may feel very annoyed
Gas-powered lawnmowers and leaf blowers	80-85	Damage to hearing possible after 2 hours of

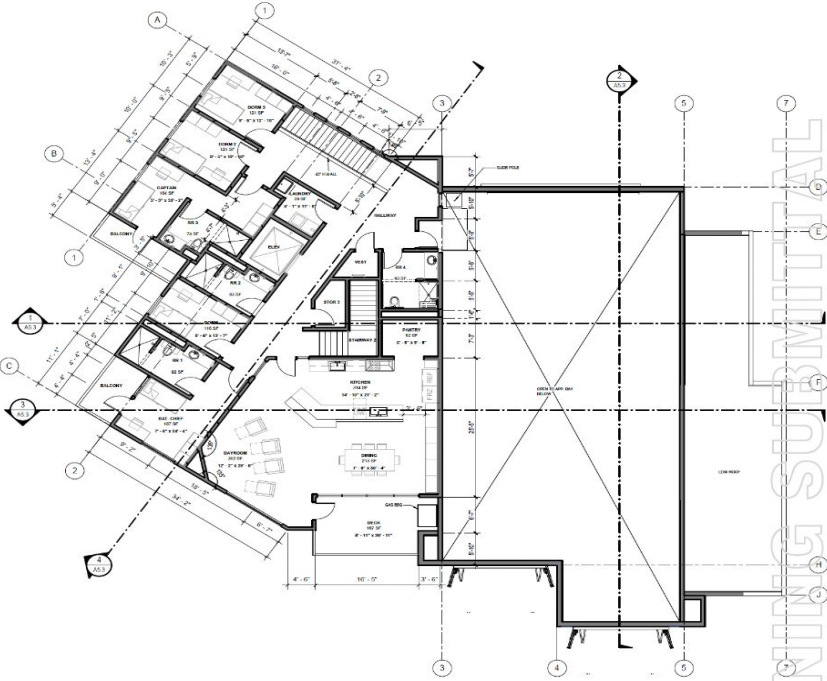
The decibel scale is logarithmic, which means that loudness is not directly proportional to sound intensity. Instead, the intensity of a sound grows very fast. This means that a sound at 20 dB is 10 times more intense than a sound at 10 dB. Also, the intensity of a sound at 100 dB is one billion times more powerful compared to a sound at 10 dB.

Two sounds that have equal intensity are not necessarily equally loud. Loudness refers to how you perceive audible sounds. A sound that seems loud in a quiet room might not be noticeable when you are on a street corner with heavy traffic, even though the sound intensity is the same. In general, to measure loudness, a sound must be increased by 10 dB to be perceived as twice as loud. For example, ten violins would sound only twice as loud as one violin.

Motorcycle	95	Damage to hearing possible after about 50 minutes of exposure
Approaching subway train, car horn at 16 feet (5 meters), and sporting events (such as hockey playoffs and football games)	100	Hearing loss possible after 15 minutes
The maximum volume level for personal listening devices; a very loud radio, stereo, or television; and loud entertainment venues (such as nightclubs, bars, and rock concerts)	105-110	Hearing loss possible in less than 5 minutes
Shouting or barking in the ear	110	Hearing loss possible in less than 2 minutes
Standing beside or near sirens	120	Pain and ear injury
Firecrackers	140-150	Pain and



FIRST FLOOR GROSS AREA = 7,025



SECOND FLOOR GROSS AREA = 3,375

**1** FP01 - FIRST FLOOR DIMENSION PLAN

FLOOR AREA CALCULATION			
FLOOR AREA CALCULATION		FLOOR AREA CALCULATION	
Name	Area	Name	Area

**2** FP02 - SECOND FLOOR DIMENSION PLAN

KEYNOTE LEGEND	
ROOM NAME	ROOM NAME & NUMBER

FLOOR PLAN LEGEND	
ROOM NAME	ROOM NAME & NUMBER

**GENERAL FLOOR PLAN NOTES**  
 1. DO NOT SCALE DRAWINGS. WRITTEN DIMENSIONS TAKE PRECEDENCE. CONTACT ARCHITECT FOR CLARIFICATION IF NECESSARY IN ORDER TO DETERMINE THE INTENT OF THIS CONTRACT DOCUMENTS.

TRAINING SUBMITTAL





STETSON STREET

**PLAN NOTES**

1. THE LIGHTING PATTERN REPRESENTS ILLUMINATION LEVELS CALCULATED FROM A SIMULATED DATA FILED UNDER CONTROLLED CONDITIONS. ILLUMINATION COULD VARY SIGNIFICANTLY UNDER UNCONTROLLED CONDITIONS. THE ILLUMINATION REPRESENTS ONLY AN APPROXIMATE GUIDE TO THE ACTUAL PERFORMANCE OF ANY MANUFACTURED LIGHTING THAT WOULD BE USED. VARIATION IN ELECTRICAL SUPPLY VOLTAGE IN PLANTS AND OTHER VARIABLE FIELD CONDITIONS.

**Statistics**

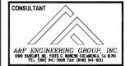
Description	Area	Avg	Min	Max	Feet	Length
Paved Drive	1	1.8 Fc	1.2 Fc	2.8 Fc	7.5'	1.8'
Left Driveway	2	0.8 Fc	0.1 Fc	1.6 Fc	3.6'	3.1'
Right Driveway	3	1.8 Fc	1.1 Fc	2.6 Fc	3.6'	1.8'
Row and Back Drive	4	1.8 Fc	0.8 Fc	2.8 Fc	8.6'	1.8'

**SITE LIGHTING FIXTURE SCHEDULE**

TYPE	MANUFACTURER	TYPE	LFY	WATTAGE	HEIGHT
1	LED	150W	150W	400-1000	10'-0"
2	LED	150W	150W	400-1000	10'-0"
3	LED	150W	150W	400-1000	10'-0"
4	LED	150W	150W	400-1000	10'-0"
5	LED	150W	150W	400-1000	10'-0"
6	LED	150W	150W	400-1000	10'-0"
7	LED	150W	150W	400-1000	10'-0"
8	LED	150W	150W	400-1000	10'-0"
9	LED	150W	150W	400-1000	10'-0"
10	LED	150W	150W	400-1000	10'-0"



**COASTLINE FIRE STATION NO. 44 REMODEL**  
 COASTLINE FIRE PROTECTION DISTRICT  
 501 STETSON STREET  
 MOSS BEACH, CA 94038



NO	DATE	BY	DESCRIPTION

REVISIONS

DRAWN: LK    CHECKED: PLS  
 DATE: 09/10/23    SCALE: AS NOTED  
 PROJECT NUMBER: XXXXXX  
 DYNAMIC





10:42 📶 🔋

Google Maps  
Open in the Google Maps app OPEN

Google Maps Open app



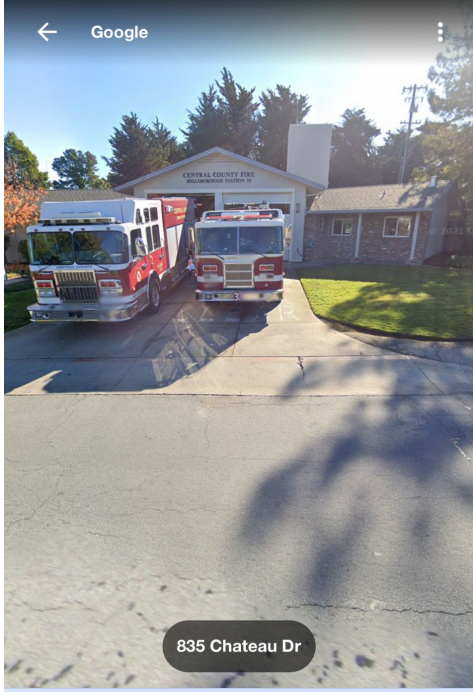
AA 🔒 google.com 🔄

< > 📌 📖 📄

10:43 📶 🔋

Google Maps  
Open in the Google Maps app OPEN

Google Maps Open app



AA 🔒 google.com 🔄

< > 📌 📖 📄

10:48 📶 🔋

Fire Station Locations

## Our Fire Stations



### CCFD Fire Station 32

330 Ascot Road  
Hillsborough, CA 94010

#### *Directions*

Engine 32  
2016 Pierce Arrow XT  
1750 GPM Pump – 500 gallons

Engine 132  
2003 Pierce Dash  
1500 GPM Pump – 500 gallons  
Out of County Engine

AA 🔒 ccfid.org 🔄

< > 📌 📖 📄

10:48



**CCFD Fire Station 33**

835 Chateau Drive  
Hillsborough, CA 94010

*Directions*

Engine 33  
2003 Pierce Dash  
1500 GPM Pump – 500 gallons

US&R 133  
2007 Spartan Diamond  
OES Type Heavy Rescue

MED CAT  
2016 Lenco Industries Armored Vehicle  
Ford Chassis

10:49



**CCFD Fire Station 35**

2832 Hillside Drive  
Burlingame, CA 94010

*Directions*

Engine 35  
2017 Pierce Arrow XT  
1750 GPM Pump – 500 gallons

10:50



**CCFD Fire Station 38**

785 Crestview Dr  
Millbrae, CA 94030

*Directions*

Engine 38  
2017 Pierce Arrow XT  
1500 GPM Pump – 500 gallons

Engine 138  
2002 Pierce Dash  
1500 GPM Pump – 500 gallons

Engine 2608  
2020 Ford  
OES Type VI Engine