



# South Ridge Fire Road & CEQA Public Comment

Quarry County Park

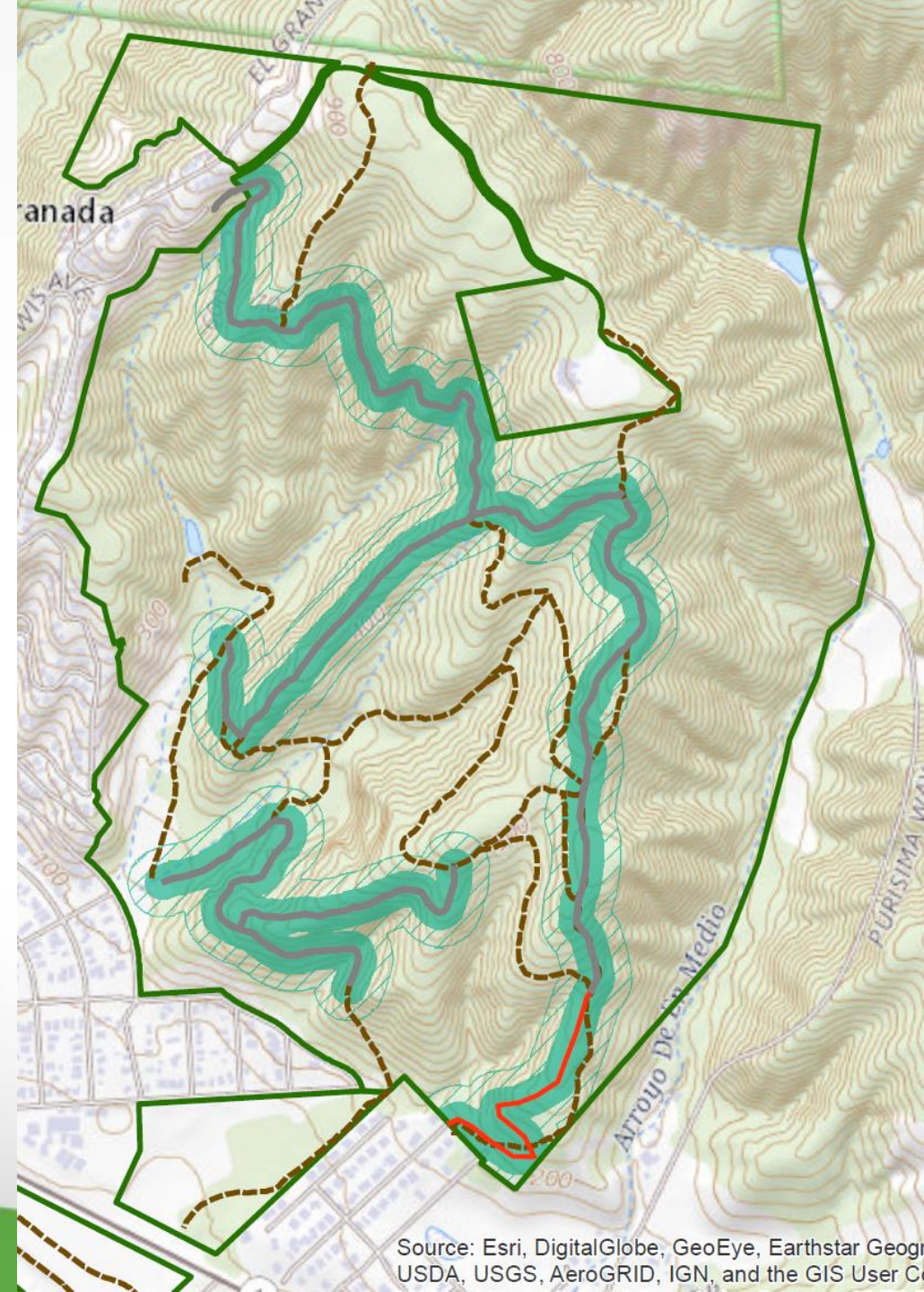
# Introduction

- Information to be shared tonight
- County Parks CEQA document & comment period
- South Ridge Fire Road
- CAL FIRE representative
- Fuel Reduction



# South Ridge Fire Road Project

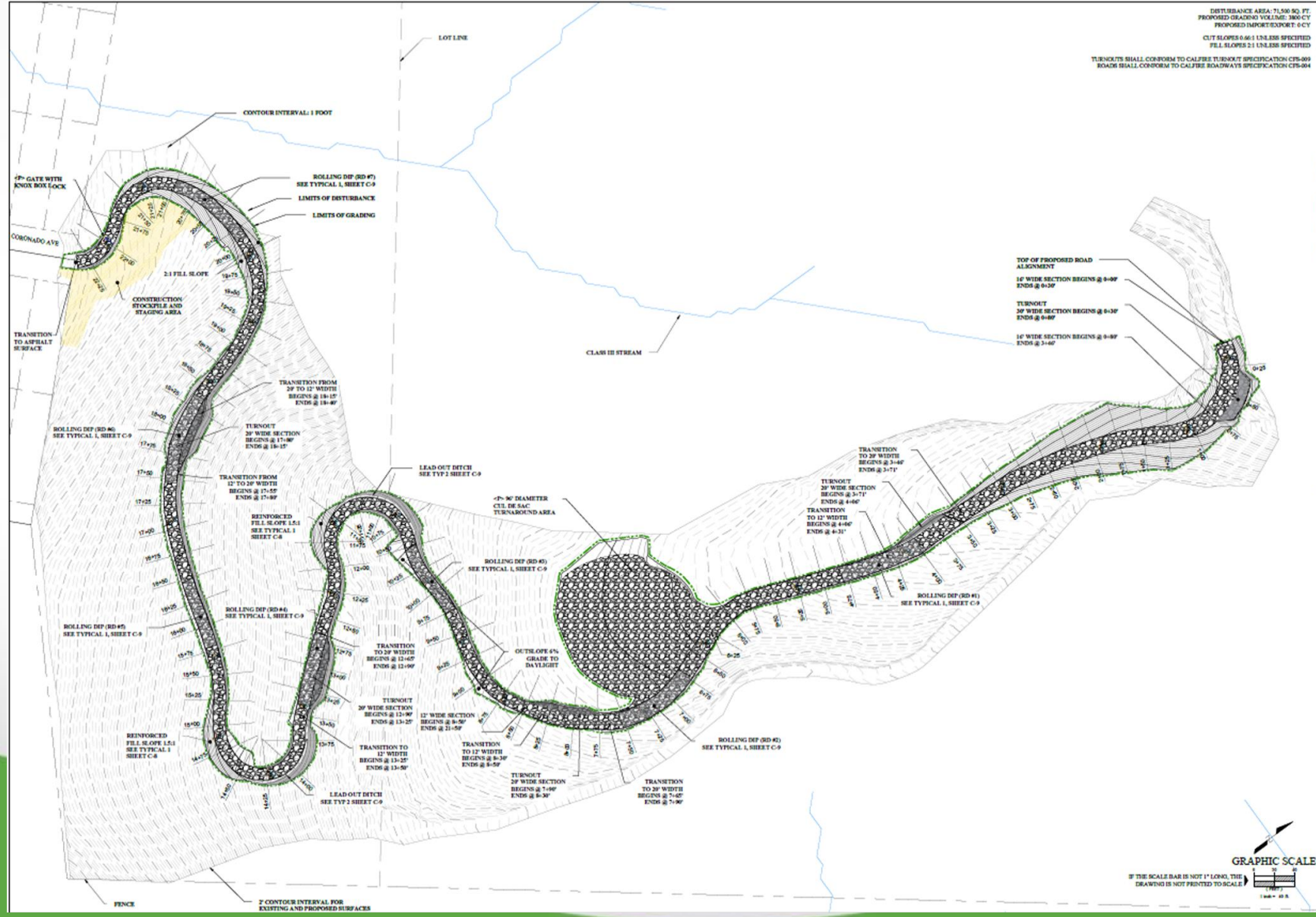
- Rationale
- Background
- Master Plan



Source: Esri, DigitalGlobe, GeoEye, Earthstar Geographics, CNR/Airphoto, IGN, USA, USGS, AeroGRID, IGN, and the GIS User Community

# Design

- Width
- Length
- Surface material
- Turnouts & turnarounds
- Slope & grade





# Road Drainage and Erosion

- Drainage features
- Slope stability
- Road maintenance



# Tree Removals

- Quantity
- Condition
- Species



# Construction Activities

- Neighborhood roads
- Noise
- Dust/air quality



# Project next steps

- CEQA
- CDP
- Construction contracting
- Grading window
- Construction timing

County of San Mateo  
Planning and Building Department

**INITIAL STUDY ENVIRONMENTAL EVALUATION CHECKLIST**  
(To Be Completed by Planning Department)

1. **Project Title:**  
Quarry County Park Wildfire Reduction and Visitor Serving Projects
2. **County File Number:**  
PLN 2022-00125
3. **Lead Agency Name and Address:**  
San Mateo County  
455 County Center, 4th Floor  
Redwood City, CA 94063





# Future Activities

- Fuel reduction
- Routine maintenance
- Ingress/egress
- Recreation



# Additional Info on CEQA Document

- Expansion of wildfire fuel reduction
- Environmental impacts assessment
- Seeking comment on accuracy of the assessment

