



Quarry Park

A review of the proposed South Ridge fire road plan.

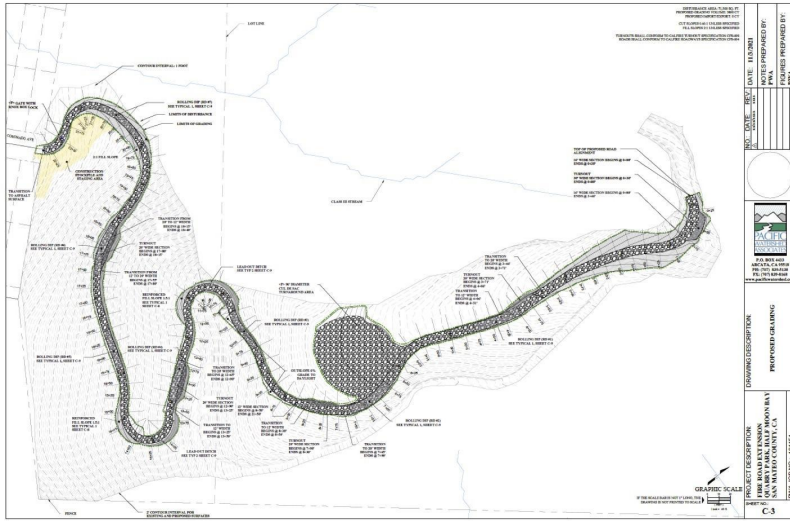


Figure 6 South Ridge Trail Fire Road Grading Plan
 Quarry County Park Wildfire Reduction and Visitor Serving Project



This is the proposed location of the South Ridge Fire Road. It begins at the east end of Coronado Ave in the Miramar community of Half Moon Bay.

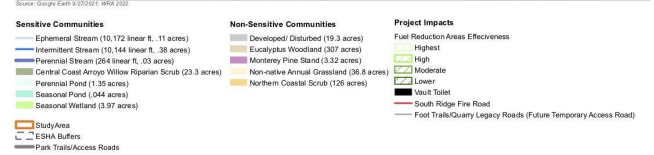
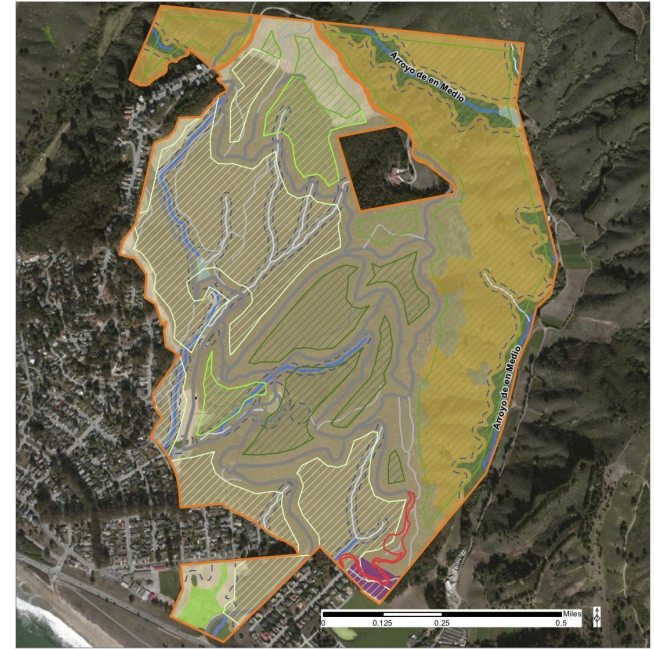


Figure 7 Biotic Habitats and Project Impact Areas
 Quarry Park Wildfire Reduction & Visitor Serving CEQA

This portion of the forest consists mostly of Monterey Pines



Start of proposed fire road on Coronado Ave.



FYI

Pinus radiata (syn. *Pinus insignis*), the **Monterey pine**,^[2] **insignis pine**^[3] or **radiata pine**, is a species of **pine** native to the Central Coast of California and Mexico (**Guadalupe Island** and **Cedros island**). It is an **evergreen conifer** in the family **Pinaceae**.

P. radiata is a versatile, fast-growing, medium-density softwood, suitable for a wide range of uses.^[4] Its **silviculture** reflects a century of research, observation and practice.^[4] It is often considered a model for growers of other plantation species.^[4] It is the most widely **planted** pine in the world, valued for rapid growth and desirable **lumber** and **pulp** qualities.

Although *P. radiata* is extensively cultivated as a **plantation timber** in many **temperate** parts of the world,^[5] it faces serious threats in its natural range,^[6] due to the introduction of pine pitch canker (*Fusarium circinatum*).



Examples of erosion caused by fire roads in Quarry park



Examples of slides caused by fire roads.



If you look closely to these two photos, you can see the sinkage and sliding of the forest floor.

Potential issues associated with fire roads in Quarry Park

- Erosion
- Trees falling onto road due to erosion
- Damage to a California native grove of trees
- Damage to Coronado Ave from heavy machinery, this may be a privately maintained road
- Increased runoff during heavy rains