



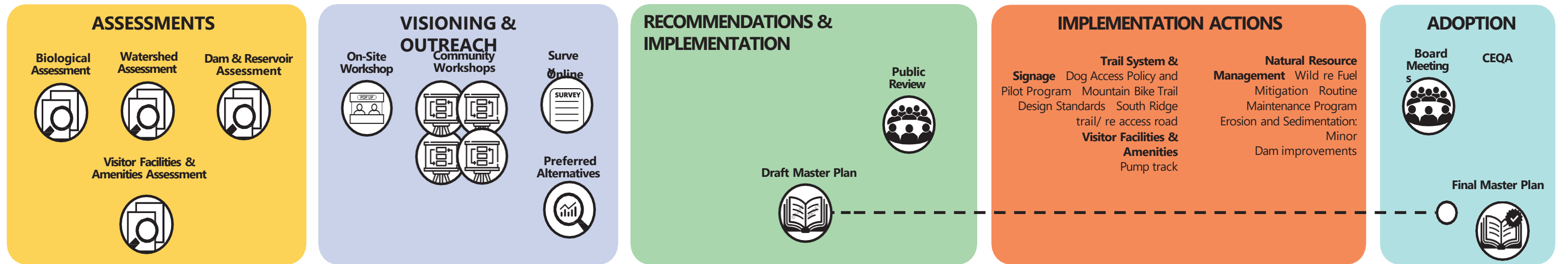
# DRAFT MASTER PLAN

## Midcoast Community Council Meeting

May 25, 2022

# MASTER PLAN

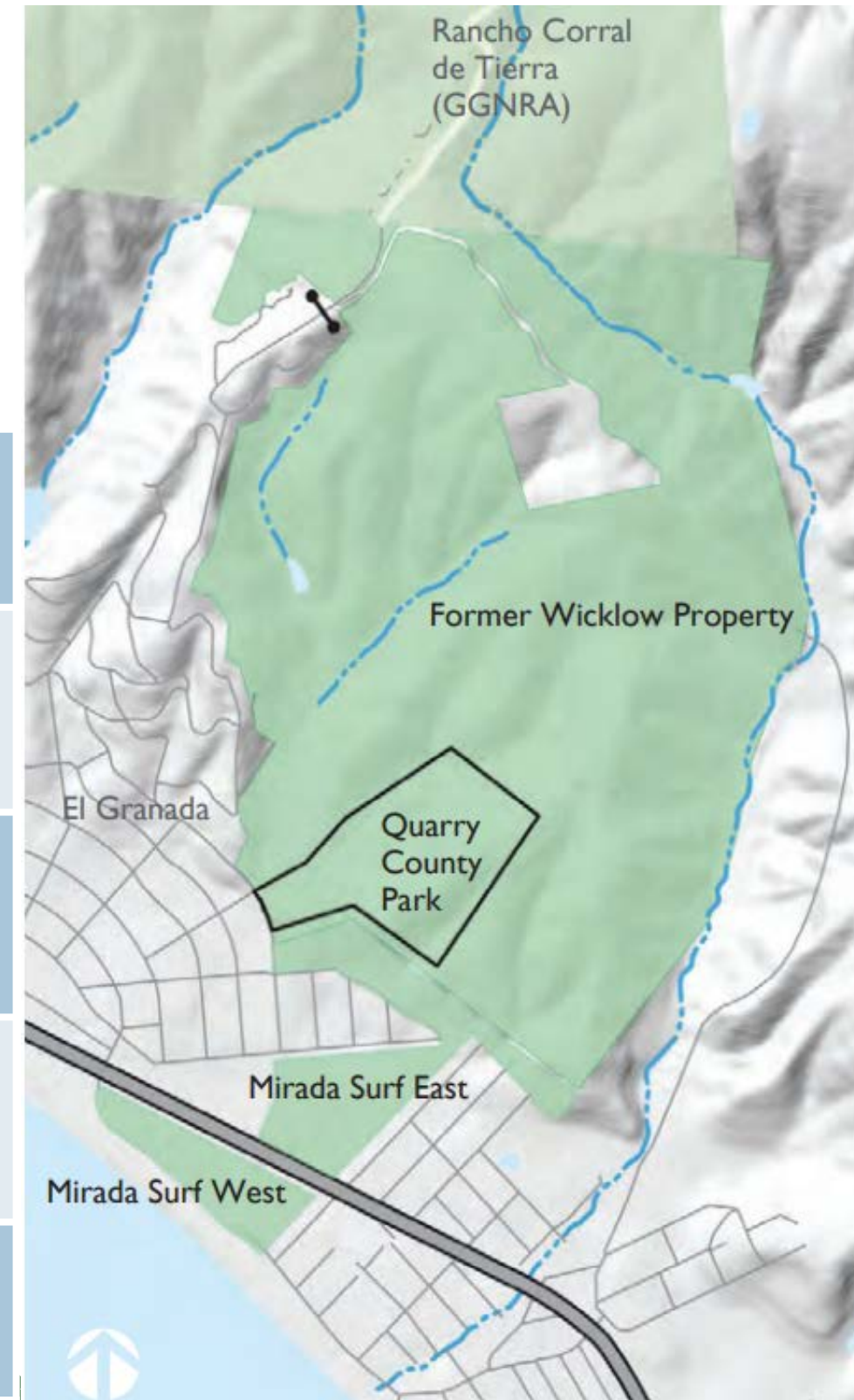
## PROJECT TIMELINE



# ABOUT THE PARK

## HISTORY OF THE LAND

TIME	EVENT / STATUS
Before 1995	Quarry Park in private ownership
1995 - 2010	MidCoast Park Lands (MPL) volunteers manages park
2001 - 2002	County acquired Mirada Surf East & Mirada Surf West
2010	San Mateo County Parks Dept assumes management
2014	County added Wicklow Property to park



# ABOUT THE PARK

## LEGACY ISSUES TO ADDRESS IN PLAN

- Improving and expanding recreational, maintenance, and emergency access throughout the park
- Improving drainage and reducing erosion and sediment discharge occurring as a result of legacy roads and trails
- Addressing community desire to continue existing on and off-leash dog access to trails
- Addressing conflicts between hiking (with or without dogs) and mountain bikers on trails
- Mitigate the threat of wildfire in El Granada
- Developing recommendations for management of sensitive habitats and species and restoration to more native conditions
- Assessing issues associated with the existing earthen dam and reservoir
- Exploring ways in which the Parks Department could expand allowed uses and amenities to meet additional desired recreational improvements based on community needs
- Examining opportunities to improve and expand existing trail network and linkages to neighboring GGNRA Rancho Corral de Tierra



# VISIONING & OUTREACH

## OVERVIEW

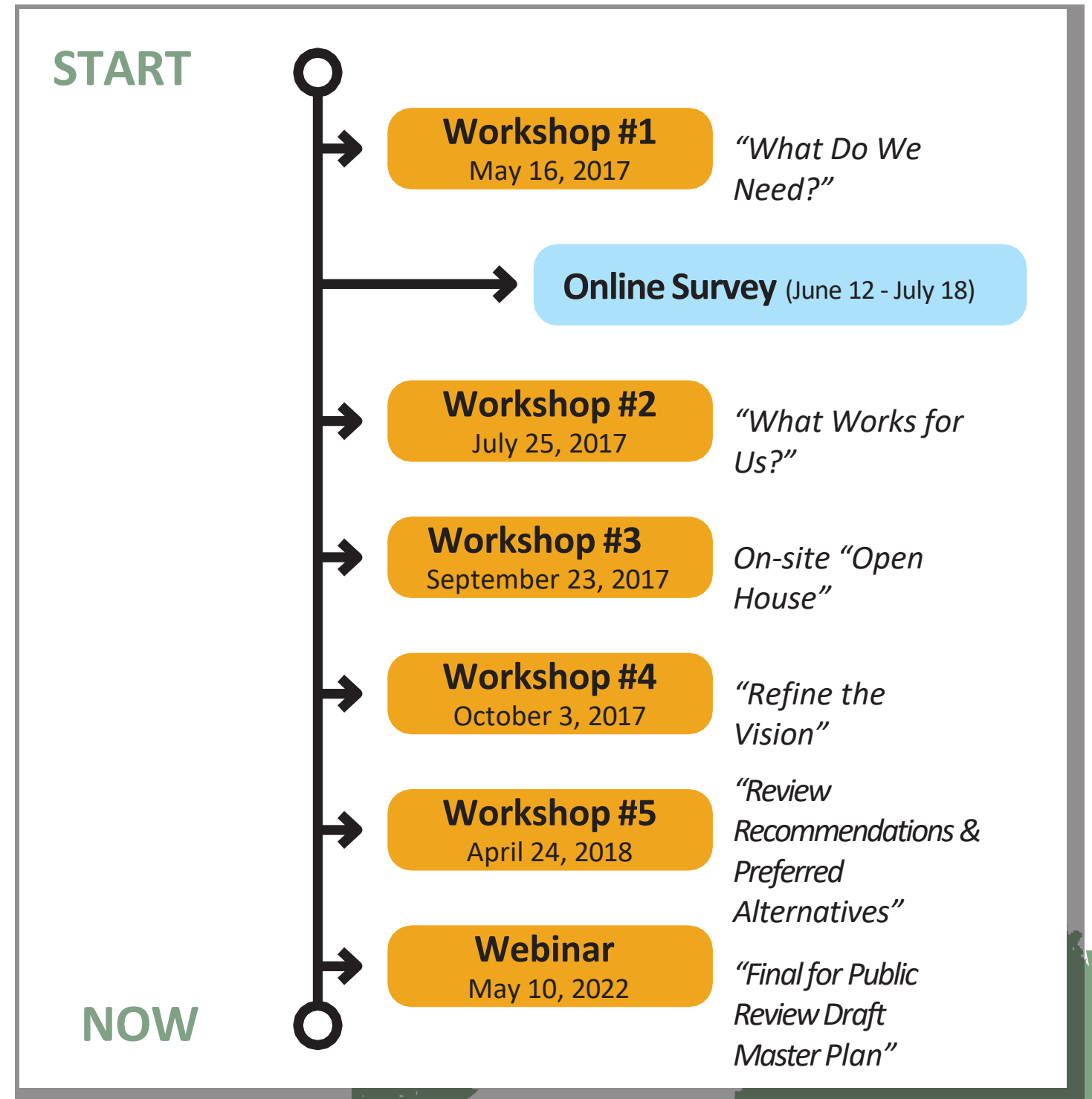
### Robust, multi-faceted outreach process

- Five (5) Community workshops
- Online survey
- On-site walks



**495+**

TOTAL PARTICIPANTS

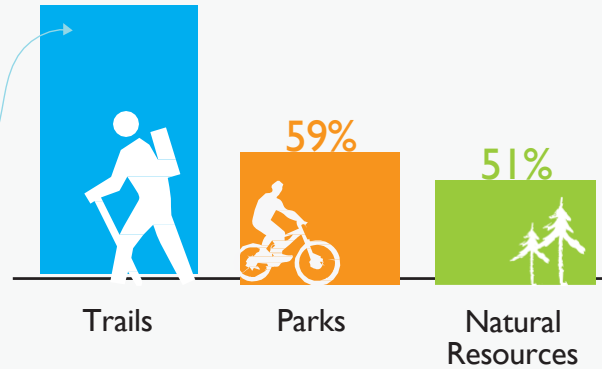


# VISIONING & OUTREACH

## ONLINE SURVEY RESULTS

### PRIORITY RANKING FOR IMPROVEMENTS

\* Percentage of respondents who ranked category as most or somewhat important for improvements



### PARK IMPROVEMENTS

HOW IMPORTANT ARE THE FOLLOWING POTENTIAL IMPROVEMENTS?



### TRAIL IMPROVEMENTS

HOW IMPORTANT ARE THE FOLLOWING POTENTIAL IMPROVEMENTS?



### NATURAL RESOURCE MANAGEMENT

HOW IMPORTANT ARE THE FOLLOWING EFFORTS?



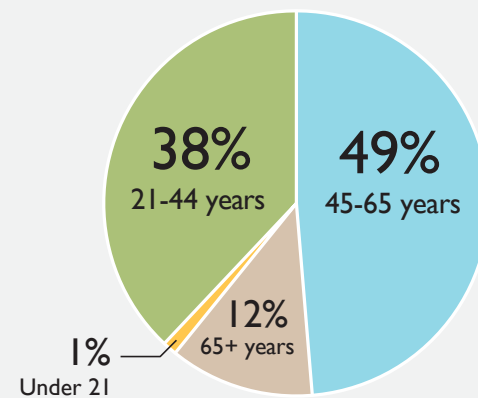
### DOG ACCESS

HOW IMPORTANT ARE THE FOLLOWING POTENTIAL AMENITIES / IMPROVEMENTS?



**235**  
participants

### AGE DEMOGRAPHICS















# VISIONING & OUTREACH

## THEMES

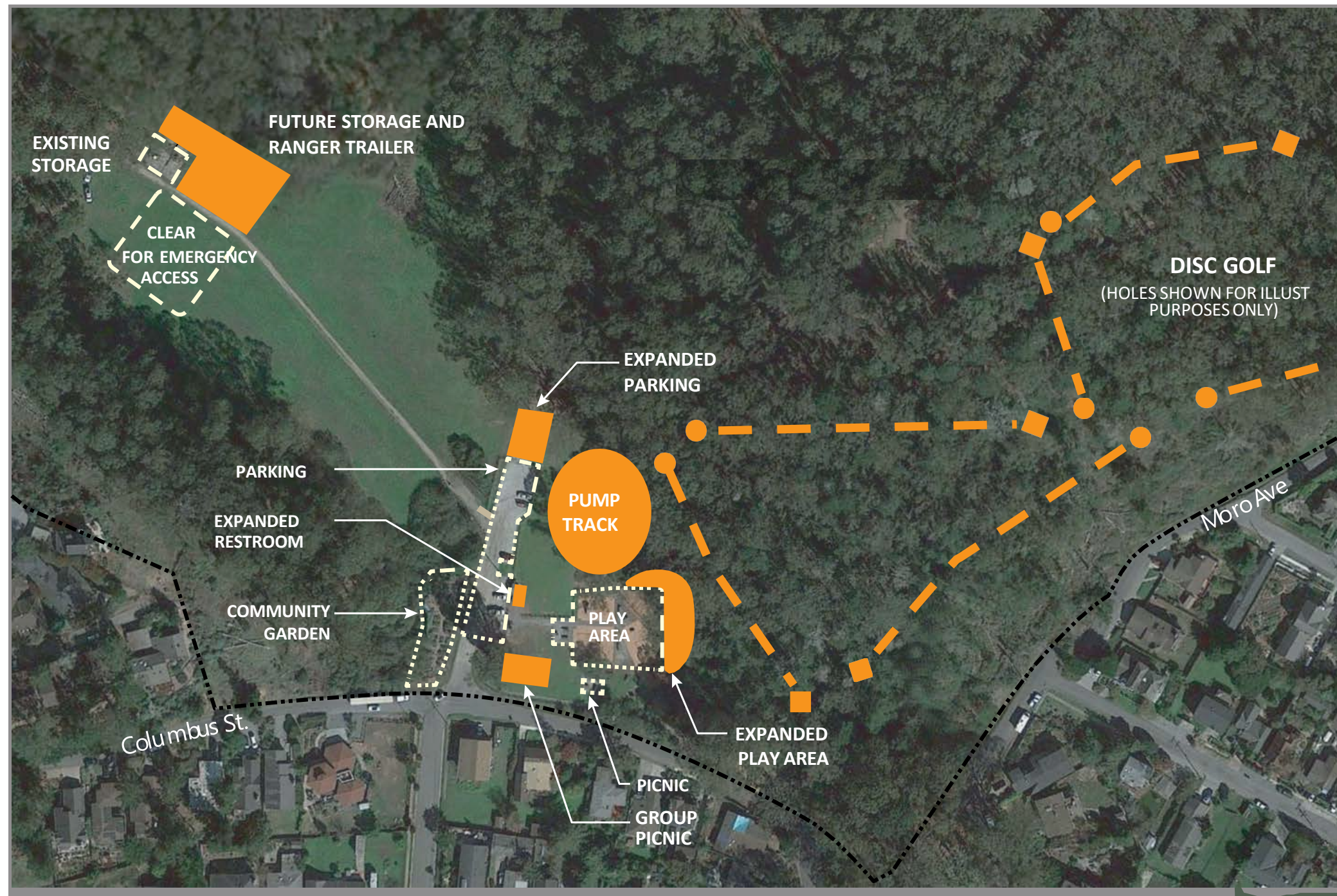
- Dog-Friendly Features
- Local Park Amenities for Youth
- Safe Co-use of Trails
- Preservation & Restoration of Natural Resources

**PRIORITY MATRIX: NEW PARK AMENITIES**

ACTIVITY	OVERALL RANKING	# OF VOTES PER CATEGORY		
		VERY IMPORTANT	SOMEWHAT IMPORTANT	NOT IMPORTANT
 Pump Track 	1	20		
 Fenced Off-Leash Dog Park 	2	15		
 Additional Parking 	3	11		
 Disc Golf 	4	8		
 Bocce Courts 	5	5	7	
 Pickleball 	6	12		7
? Other Horse Shoes Stage Area Horse Access Signage / Wetland Restoration		8 8 7 7		

# VISIONING & OUTREACH

## PREFERRED ALTERNATIVE (ENTRY MEADOW)



» Preferred Plan as shown at Community Workshop (4/24/2018)



# RECOMMENDATIONS

## CATEGORIES

### GOALS



**PRESERVE**  
“unique  
environmental”  
setting



**PROTECT**  
environmental  
systems



**PROVIDE**  
recreation  
opportunities



**PROMOTE**  
a sustainable  
vision

### RECOMMENDATIONS

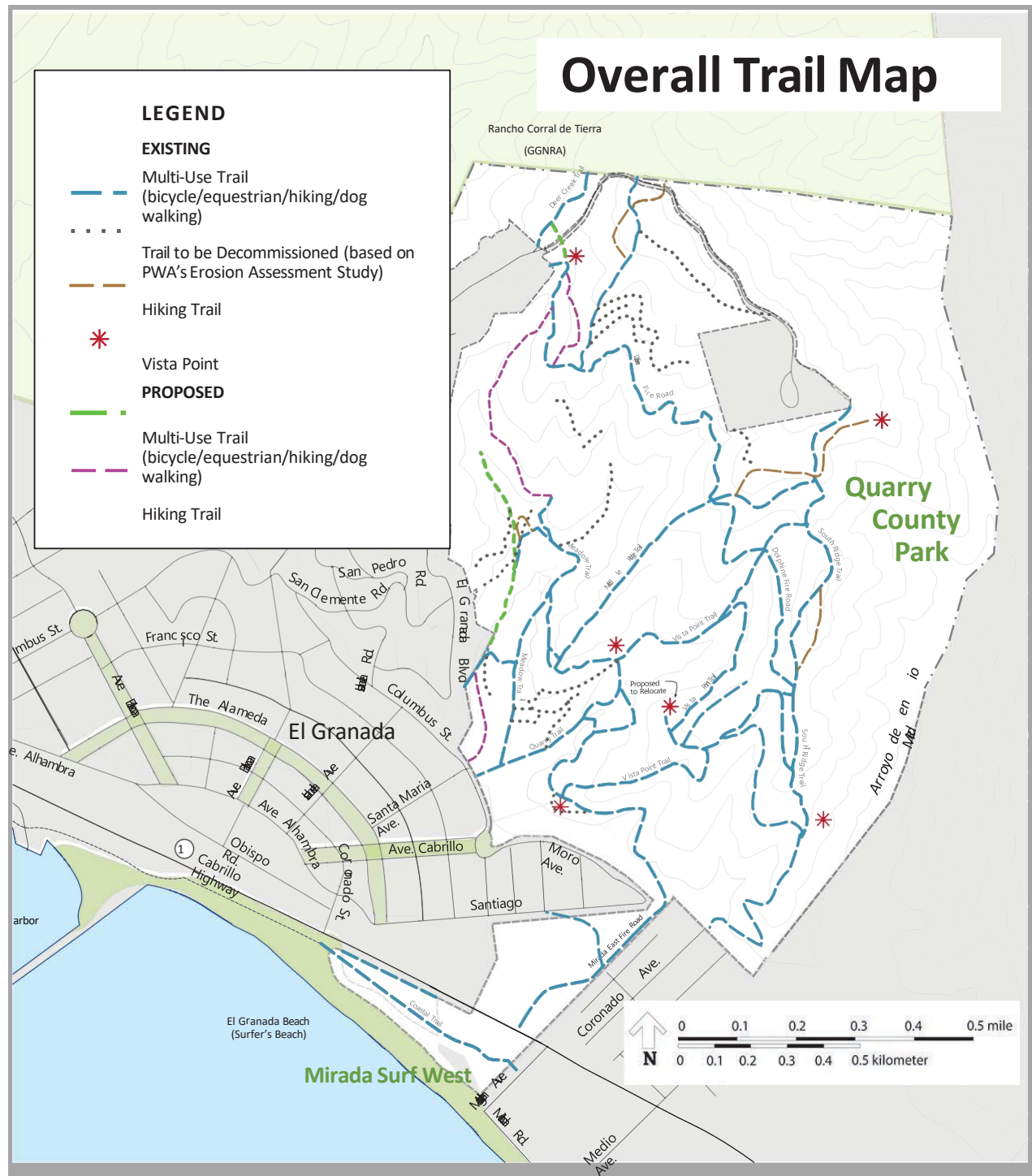
**Trail System  
& Signage**

**Visitor Facilities  
& Amenities**

**Natural Resource  
Management**

# RECOMMENDATIONS

## TRAIL SYSTEM & SIGNAGE



## Recommendations

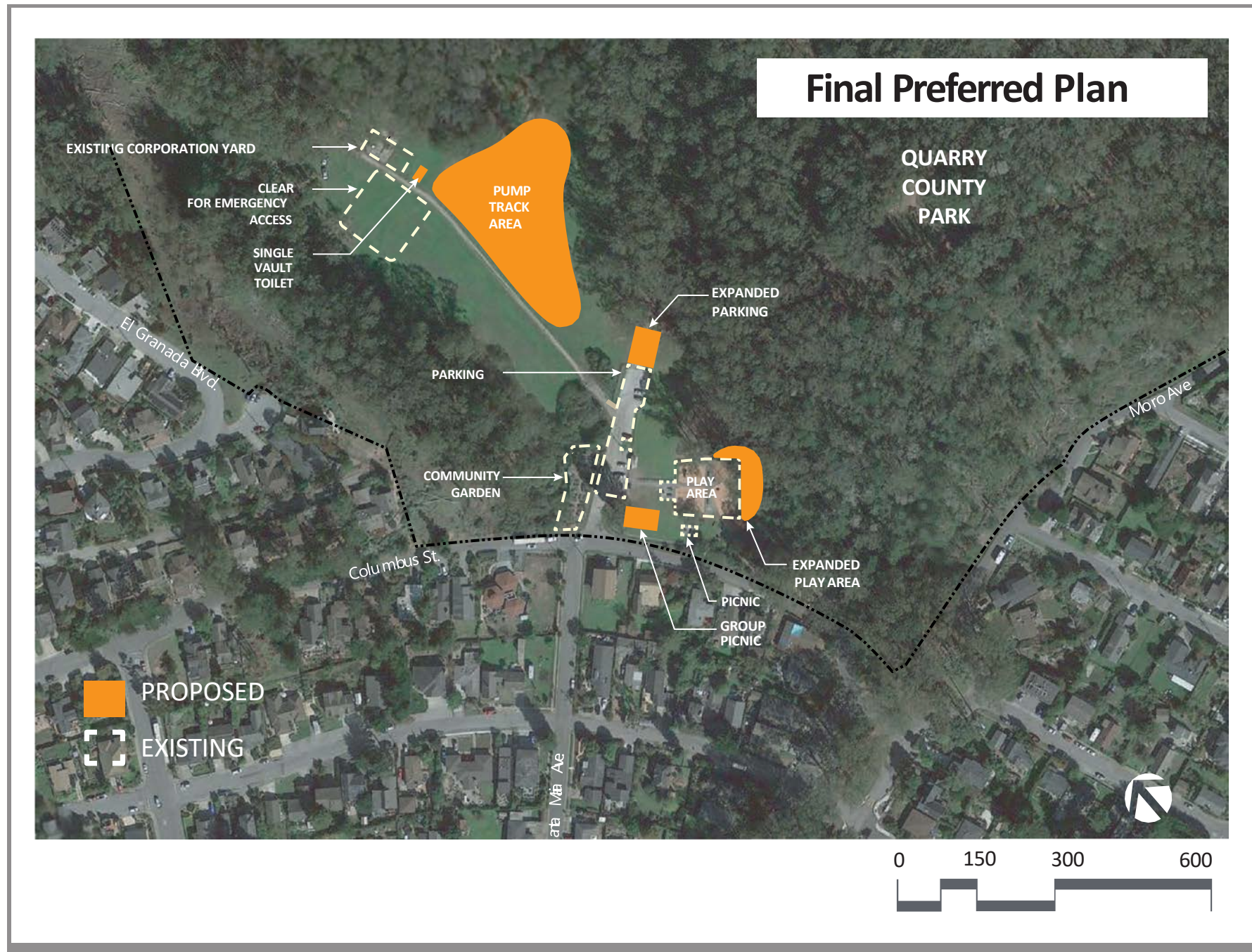
- Provide a trail network that accommodates multiple user groups
- Construct regional trail connectors
- Address sediment and erosion issues
- Decommission specified trails
- Improve interpretive and wayfinding signage

# RECOMMENDATIONS

## VISITOR FACILITIES & AMENITIES



### ENTRY MEADOW



### Recommendations

- Expand and upgrade play area
- Improve process for Community Gardens
- Increase restrooms
- Increase parking capacity
- Improve quarry floor
- Add a pump track
- Improve facilities for hikers with dogs

# RECOMMENDATIONS

## NATURAL RESOURCE MANAGEMENT



**Erosion & Sedimentation  
Management**



**Wildfire Hazard  
Reduction**



**Habitat Protection &  
Enhancement**



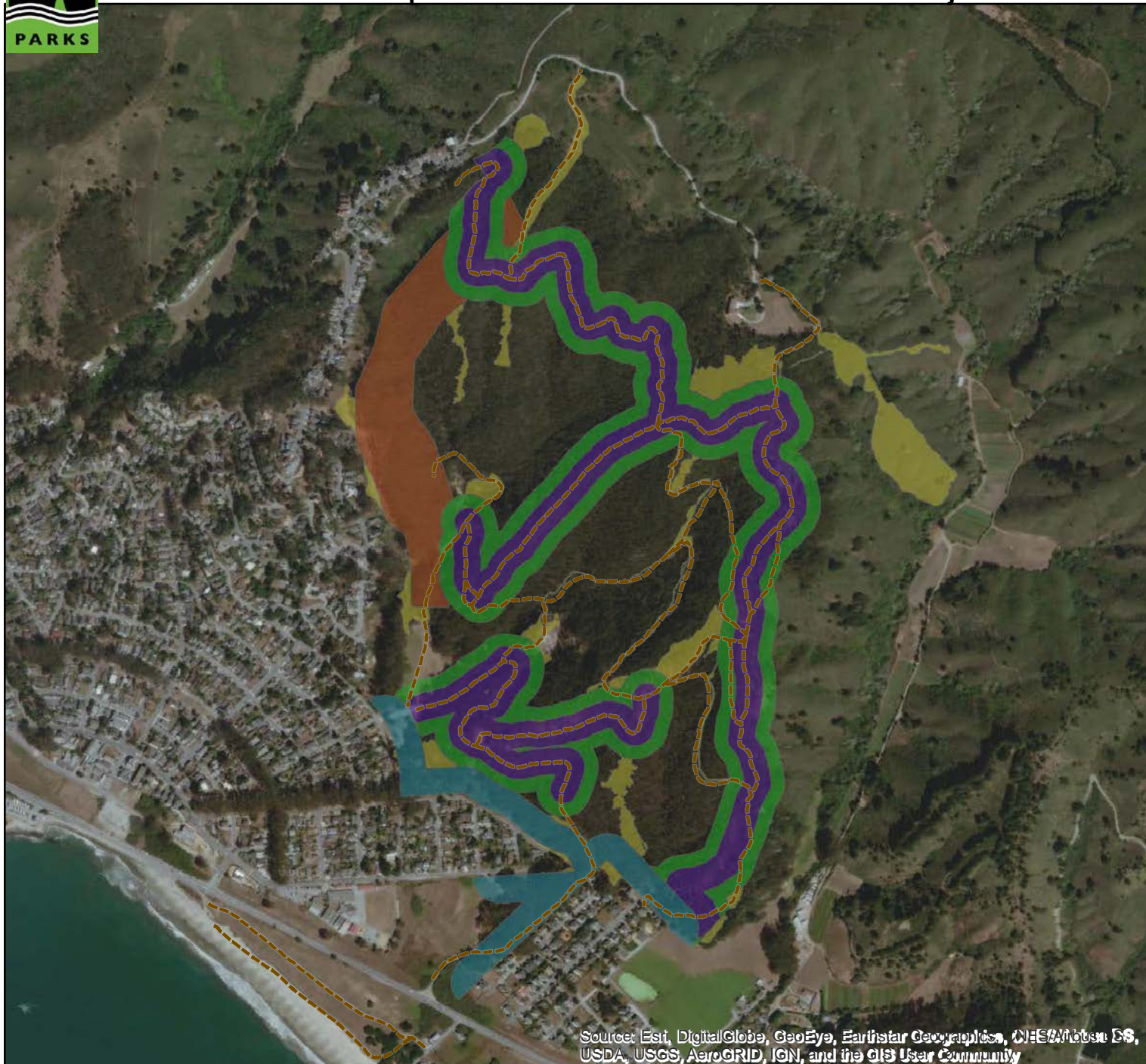
# RECOMMENDATIONS

## NATURAL RESOURCE MANAGEMENT



Quarry County Park

All Planned or Implemented Fuel Reduction Projects



Source: Esri, DigitalGlobe, GeoEye, Earthstar Geographics, CNES/Airbus DS, USDA, USGS, AeroGRID, IGN, and the GIS User Community

### Wildfire Threat Management

- CalFire and San Mateo Resource Conservation District coordination
- Fire road and emergency access
- Prioritize ingress and egress
- Tree maintenance
- Habitat protection
- *County Parks has been implementing recommendations*
  - - 2021-2026 Wildfire Fuel Management Program



quarry  
county park  
MASTER PLAN

# IMPLEMENTATION

## ACTION PLAN

### RECOMMENDATIONS

Trail System  
& Signage

Visitor Facilities  
& Amenities

Natural Resource  
Management



### IMPLEMENTATION

### TIMEFRAMES

In Progress

Ongoing

Short Term  
(0-5 years)

Medium Term  
(5-10 years)

Long Term  
(10-20 years)

# IMPLEMENTATION

## EFFORTS-TO-DATE (2018-2022)

Draft recommendations were shared with the community in Spring 2018; however, from then to now, the County has been implementing Master Plan recommendations:

### Trail System & Signage

- Dog Access Policy and Off Leash Pilot Program
- Mountain Bike Trail Design Standards (to be introduced with an addendum to the Final Plan)
- South Ridge Road fire access

### Visitor Facilities & Amenities

- Pump track under construction
- Restroom and Parking

### Natural Resource Management

- Wildfire Fuel Mitigation
- Routine Maintenance Program
- Erosion and Sedimentation: Legacy road and minor reservoir improvements

# IMPLEMENTATION

## TRAIL SYSTEM & SIGNAGE



Map from SMC Park Dept Memo, dated February 6, 2020.  
The park is now called "Quarry County Park" and the pond is recognized as a reservoir.

### Dog Access Policy

- To expand recreational opportunities for dogs in County Parks
- County amended ordinance 3.68
- Off-Leash Dog Recreation Pilot Program
  - Quarry County Park pilot program approved by Board of Supervisors in April 2022



# IMPLEMENTATION

## TRAIL SYSTEM & SIGNAGE

### South Ridge Fire Road / Trail

- CalFire priority
  - Create access for first responders
- Project is at 90% design
  - CEQA and permitting are being initiated
  - Public Works capital project

### Mountain Bike Trail Design Standards

- Only applicable at Quarry Park
- Evaluate existing trails
- Trails not meeting the standards will be modified to meet the standards or decommissioned

# IMPLEMENTATION

## VISITOR FACILITIES & AMENITIES



### Pump Track

- Two pump tracks
  - Beginner and Intermediate/advanced riders
  - Skill building trail

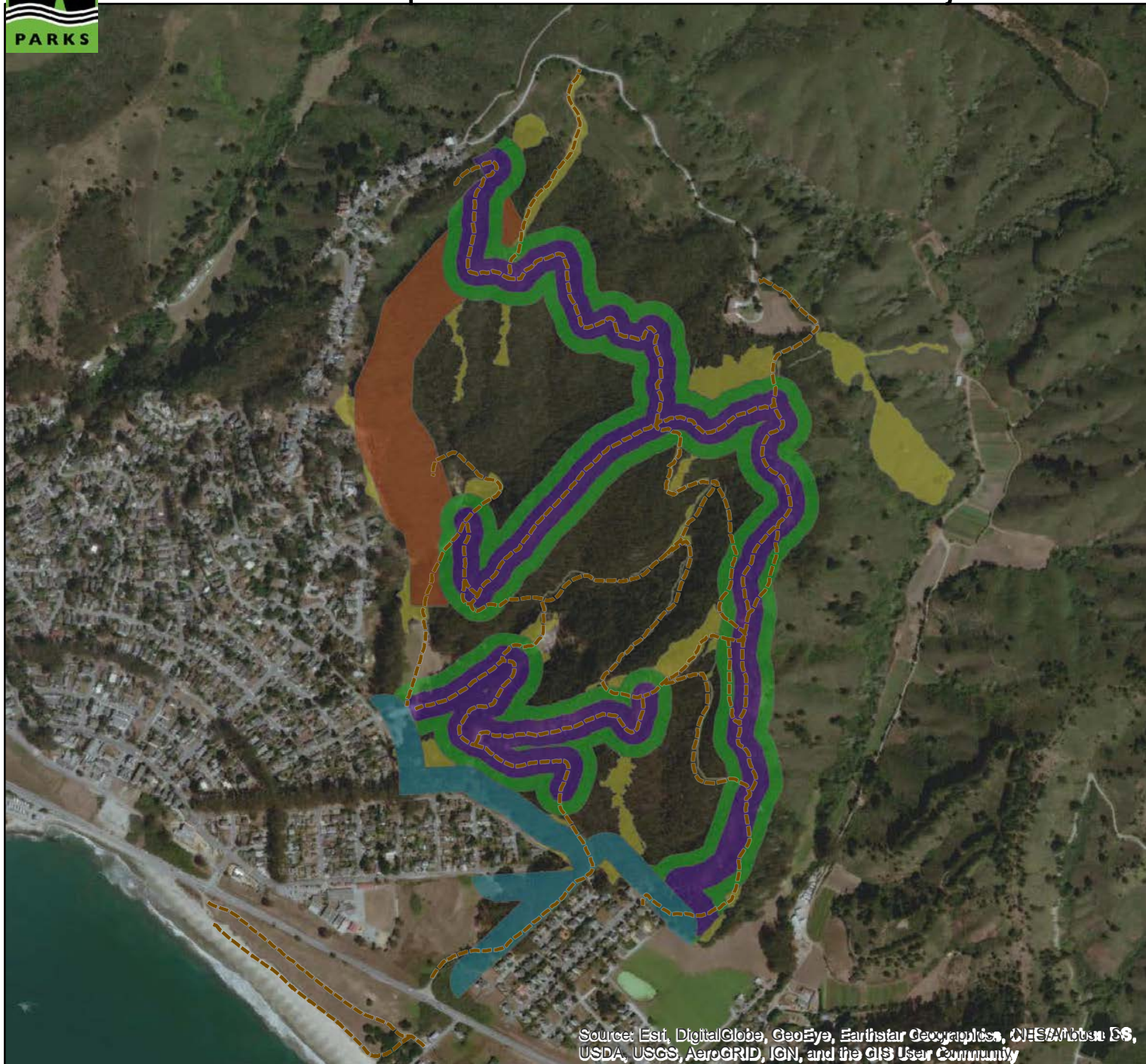
# IMPLEMENTATION

## NATURAL RESOURCE MANAGEMENT



Quarry County Park

All Planned or Implemented Fuel Reduction Projects



Source: Esri, DigitalGlobe, GeoEye, Earthstar Geographics, CNES/Airbus DS, USDA, USGS, AeroGRID, IGN, and the GIS User Community

### Wildfire Fuel Mitigation

- Project #2 - Maintenance of 2019 Governor's Emergency Fuels Reduction Project
- Project #8 - Create and Maintain a Fuel Break Along Western Quarry Park Boundary
- Project #16 - Create and Maintain a Shaded Fuel Break Along Fire Roads in Quarry Park and Mirada East



# ADOPTION

## NEXT STEPS

### [Parks.SMCgov.org/Quarry-Park-Master-Plan](https://Parks.SMCgov.org/Quarry-Park-Master-Plan)

- Public comment period
  - Submit comments online through June 6, 2022
- Online Survey
  - Hosted by the Parks Department online May 11 through June 6, 2022
  - Board of Supervisors to recommend initiation of CEQA review process
- CEQA environmental review process
- Adoption of Final Master Plan and certification of CEQA by County Board of Supervisors
  - Tentative March 2023

# PUBLIC COMMENT

[Parks.SMCgov.org/Quarry-Park-Master-Plan](https://Parks.SMCgov.org/Quarry-Park-Master-Plan)

Submit comments online May 11 through June 6, 2022

THANK YOU!



quarry  
county park  
MASTER PLAN