



MIDPENINSULA REGIONAL OPEN SPACE DISTRICT

Projects at Purisima Creek Redwoods Open Space Preserve

Midcoast Community Council
February 23, 2022



Presentation Outline

- Midpen introductions
- Project presentations
 - Highway 35 Multi-Use Trail Crossing and Parking Feasibility Study
 - Purisima-to-the-Sea Trail and Parking Area Feasibility Study
 - Purisima Creek Multimodal Access Study
- Questions



About Midpen



Public agency, created in 1972 by a grassroots voter initiative

Mission:

“To acquire a regional greenbelt of open space land in perpetuity, protect and restore the natural environment, and provide opportunities for ecologically sensitive public enjoyment and education.”

San Mateo County Coastside Mission (2004):

“To acquire and preserve in perpetuity open space land and agricultural land of regional significance, protect and restore the natural environment, preserve rural character, encourage viable agricultural use of land resources, and provide opportunities for ecologically sensitive public enjoyment and education.”



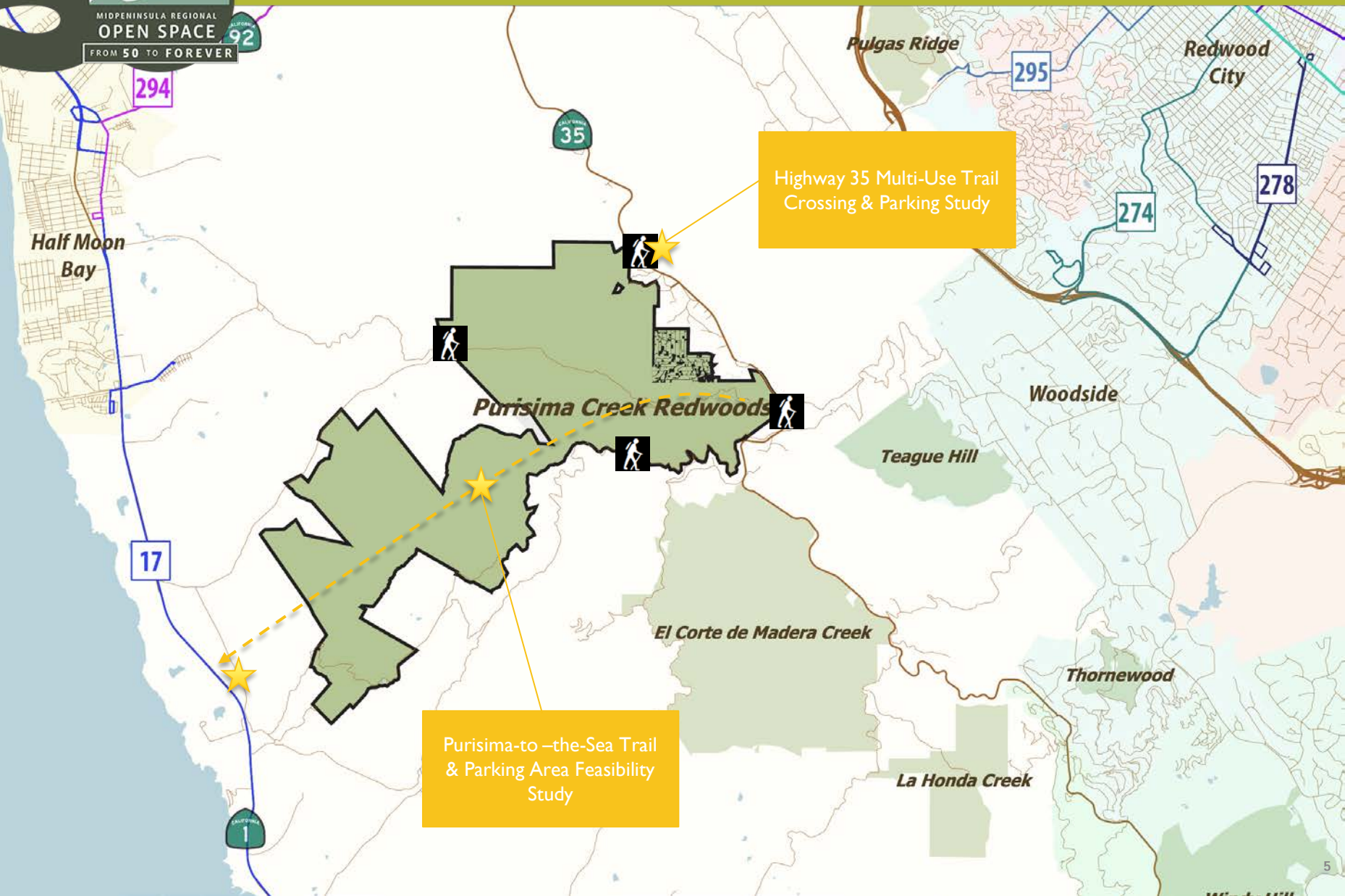
District Preserves

Purissima Creek



#	Preserves
1	Bear Creek Redwoods Opening in 2019
2	Coal Creek
3	El Corte de Madera Creek
4	El Sereno
5	Foothills
6	Fremont Older
7	La Honda Creek
8	Long Ridge
9	Los Trancos
10	Miramontes Ridge
11	Monte Bello
12	Picchetti Ranch
13	Pulgas Ridge
14	Purissima Creek Redwoods
15	Rancho San Antonio
16	Ravenswood
17	Russian Ridge
18	Saratoga Gap
19	Sierra Azul
20	Skyline Ridge
21	St. Joseph's Hill
22	Stevens Creek Shoreline Nature Study Area
23	Teague Hill
24	Thornewood
25	Tunitas Creek
26	Windy Hill

Project Locations and Study Areas – Purisima Creek Redwoods Open Space Preserve



Highway 35 Multi-Use Trail Crossing & Parking Study

Purisima-to-the-Sea Trail & Parking Area Feasibility Study



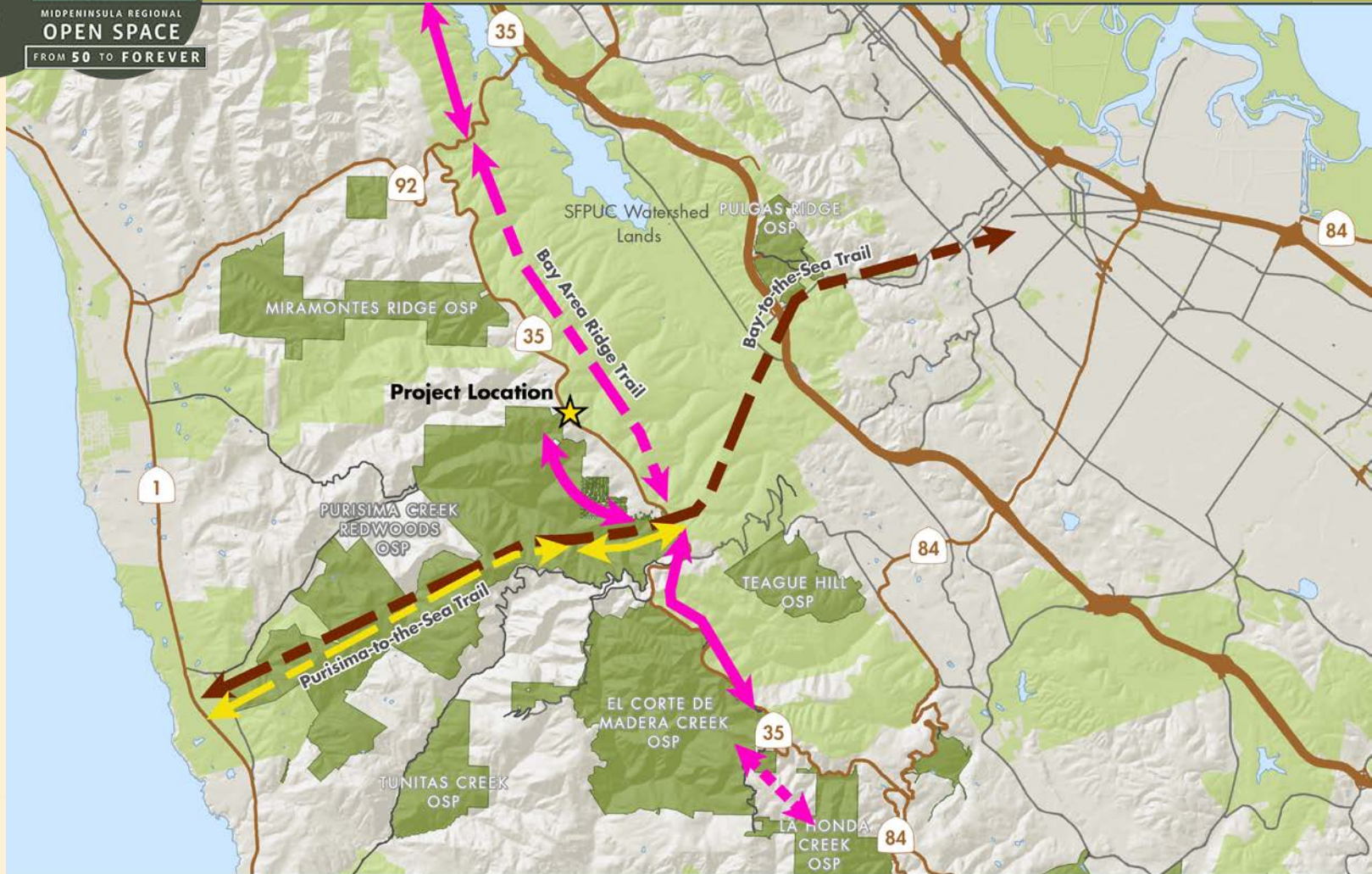
MIDPENINSULA REGIONAL OPEN SPACE DISTRICT



Highway 35 Multi-Use Trail Crossing and Parking Study



Project Location – Purisima Creek Redwoods Open Space Preserve



Highway 35 Crossing and Parking Lot

- | | | |
|-----------------------|--------------------------------------|-------------------------------|
| MROSD Preserves | Bay-to-the-Sea Conceptual Trail | Existing Bay Area Ridge Trail |
| Other Protected Lands | Existing Purisima-to-the-Sea Trail | Proposed Bay Area Ridge Trail |
| Private Property | Purisima-to-the-Sea Conceptual Trail | |

Midpeninsula Regional
Open Space District
(Midpen)
9/28/2020





North Ridge Parking Lot



Source: Bay Area Ridge Trail Council



Hwy 35 Multi-Use Trail Crossing and Parking Study Scope

- ‡ Analyze feasibility of a Ridge Trail crossing of Highway 35 and expansion of the North Ridge Parking Lot
- ‡ Scope Includes:
 - Boundary and Topographical Surveys
 - Traffic Study
 - Preliminary Design of Parking Lot, Crossing, and Spur Trail
 - Cultural Resources Survey
 - Biological Surveys
 - Geotechnical Engineer Study
- ‡ TBD – Project permitting, CEQA, and Implementation



Hwy 35 Multi-Use Trail Crossing and Parking Study Scope



Path: G:\Projects\Purisma_Creek_Redwoods\SFPUC Hwy 35 Crossing\Featibility_Study_Map_20211019.mxd
Created By: apath

Highway 35 Trail Crossing and Parking Lot Expansion Feasibility Study

- | | | |
|----------------------------------|--|------------------------------|
| MROSD Preserves | Planned SFPUC Bay Area Ridge Trail Extension | Spur Trail Study Area |
| SFPUC Watershed Lands | Traffic Study Area | 5 Foot Contour |
| Existing North Ridge Parking Lot | Potential Parking Lot Expansion Area | Potential Crossing Locations |

Midpeninsula Regional
Open Space District
(Midpen)
10/19/2021





MIDPENINSULA REGIONAL OPEN SPACE DISTRICT



Purissima-to-the-Sea Feasibility Study



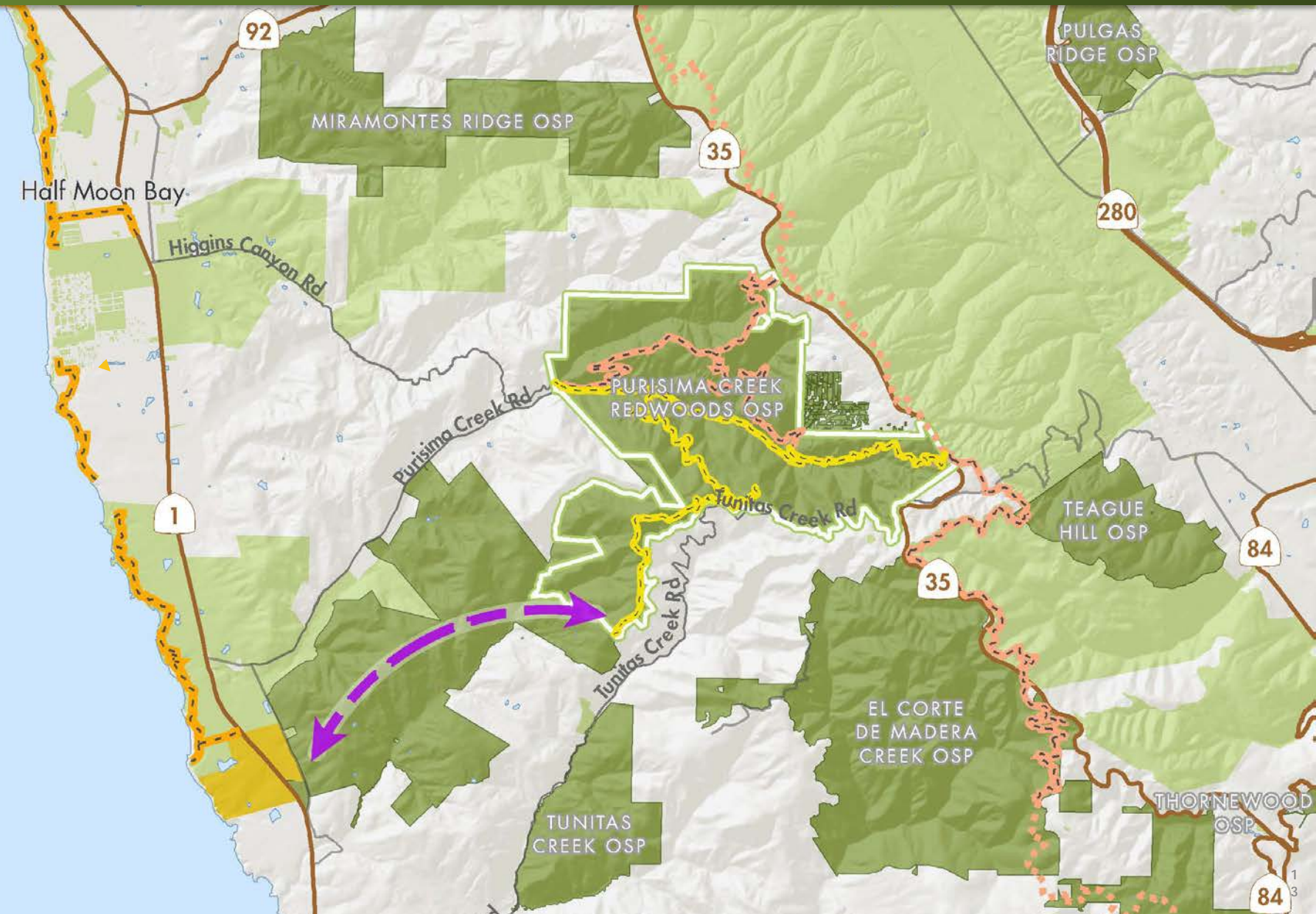
Purisima-to-the-Sea Project Vision



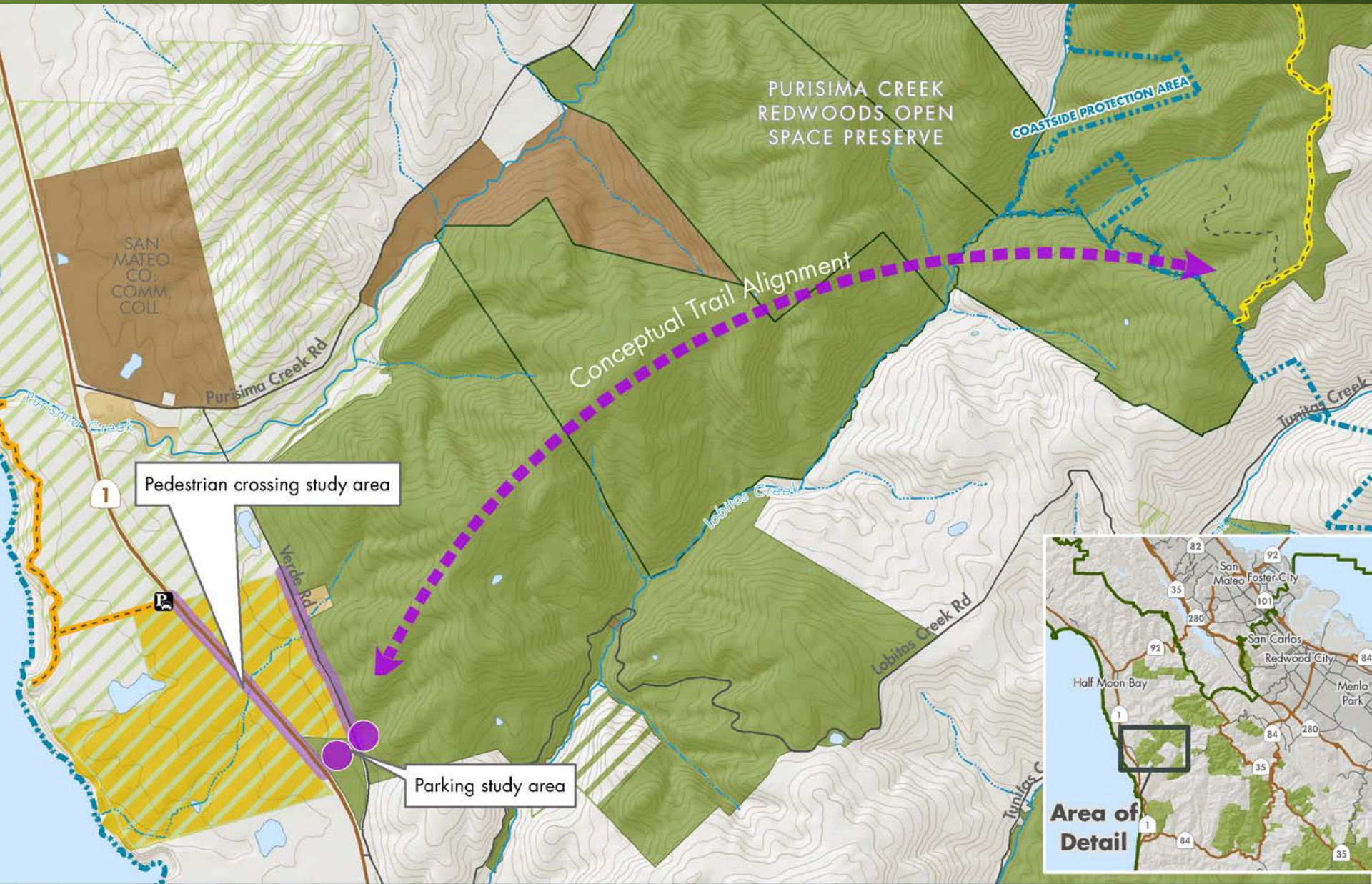
Realize the decades-long vision to connect the Santa Cruz Mountains to the Pacific Ocean in support of open space, agriculture, wildlife and people. Complete the multi-use Purisima-to-the-Sea trail connection and parking area using ecologically sensitive design and management.



Purisima-to-the-Sea Regional Trail

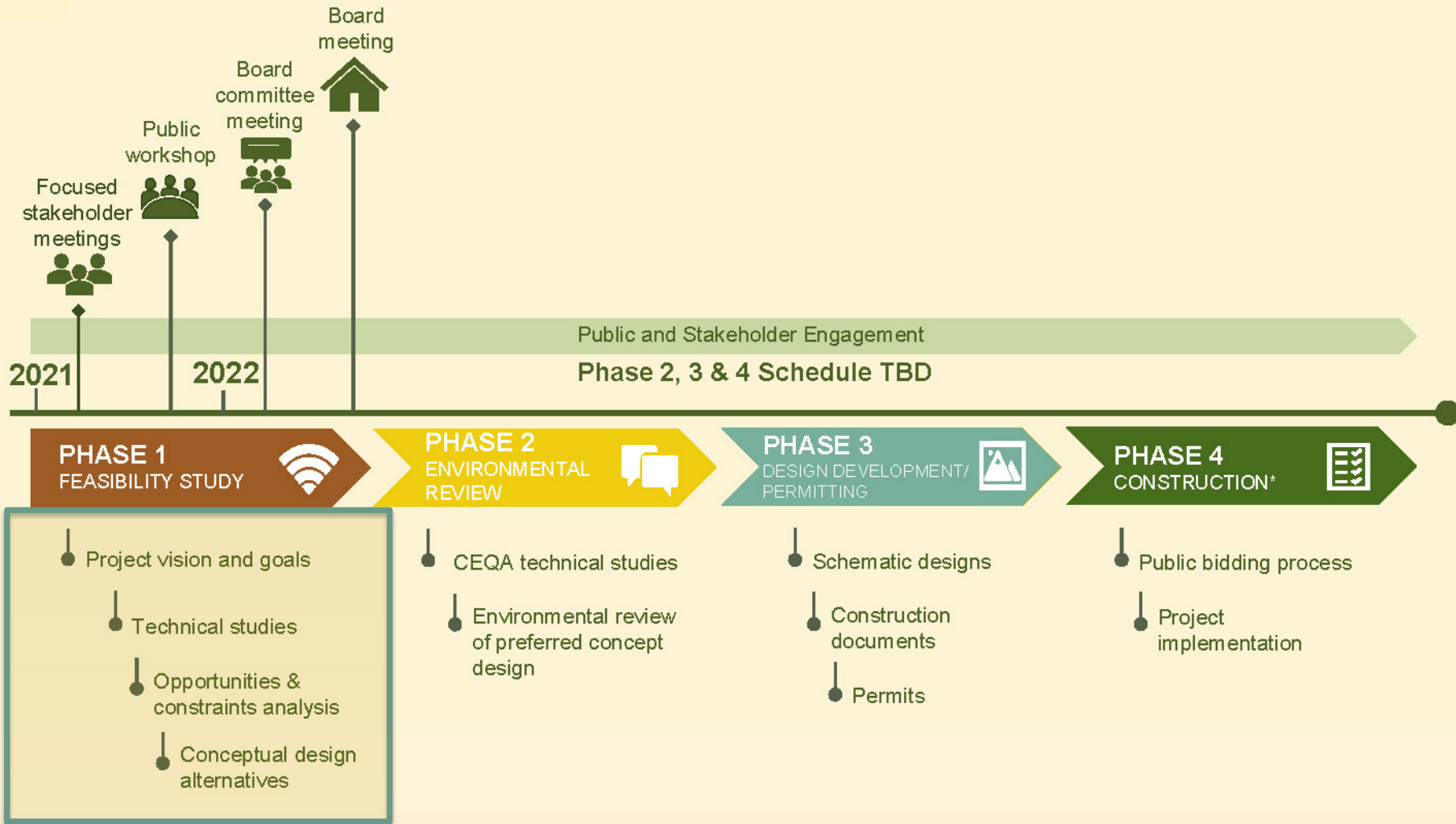


Purisima-to-the-Sea Trail & Parking Area Feasibility Study





Purisima-to-the-Sea Schedule





SITE PHOTOS





Opportunities and Constraints Analysis



Opportunities and constraints are grouped into Physical, Cultural, Biological, and Safety Attributes.

Site Analysis:

- Biological Resources Assessment
- Cultural Resources Survey
- Culvert Drainage Study
- Topographic Survey
- Traffic Study (Draft)

Public Outreach:

- Neighbors
- Coastal and Trail User Community
- Agricultural Community
- Sustainable Pescadero
- Pescadero Municipal Advisory Council
- Half Moon Bay Make It Main St



Physical Attributes and Considerations

PURISIMA-TO-THE-SEA TRAIL | OPPORTUNITIES & CONSTRAINTS ANALYSIS



FIGURE 1 | PHYSICAL ATTRIBUTES 8



Cultural Attributes and Considerations

PURISIMA-TO-THE-SEA TRAIL | OPPORTUNITIES & CONSTRAINTS ANALYSIS



FIGURE 2 | CULTURAL ATTRIBUTES⁹



Biological Attributes and Considerations

PURISIMA-TO-THE-SEA TRAIL | OPPORTUNITIES & CONSTRAINTS ANALYSIS



FIGURE 3 | BIOLOGICAL ATTRIBUTES



Safety Attributes and Considerations

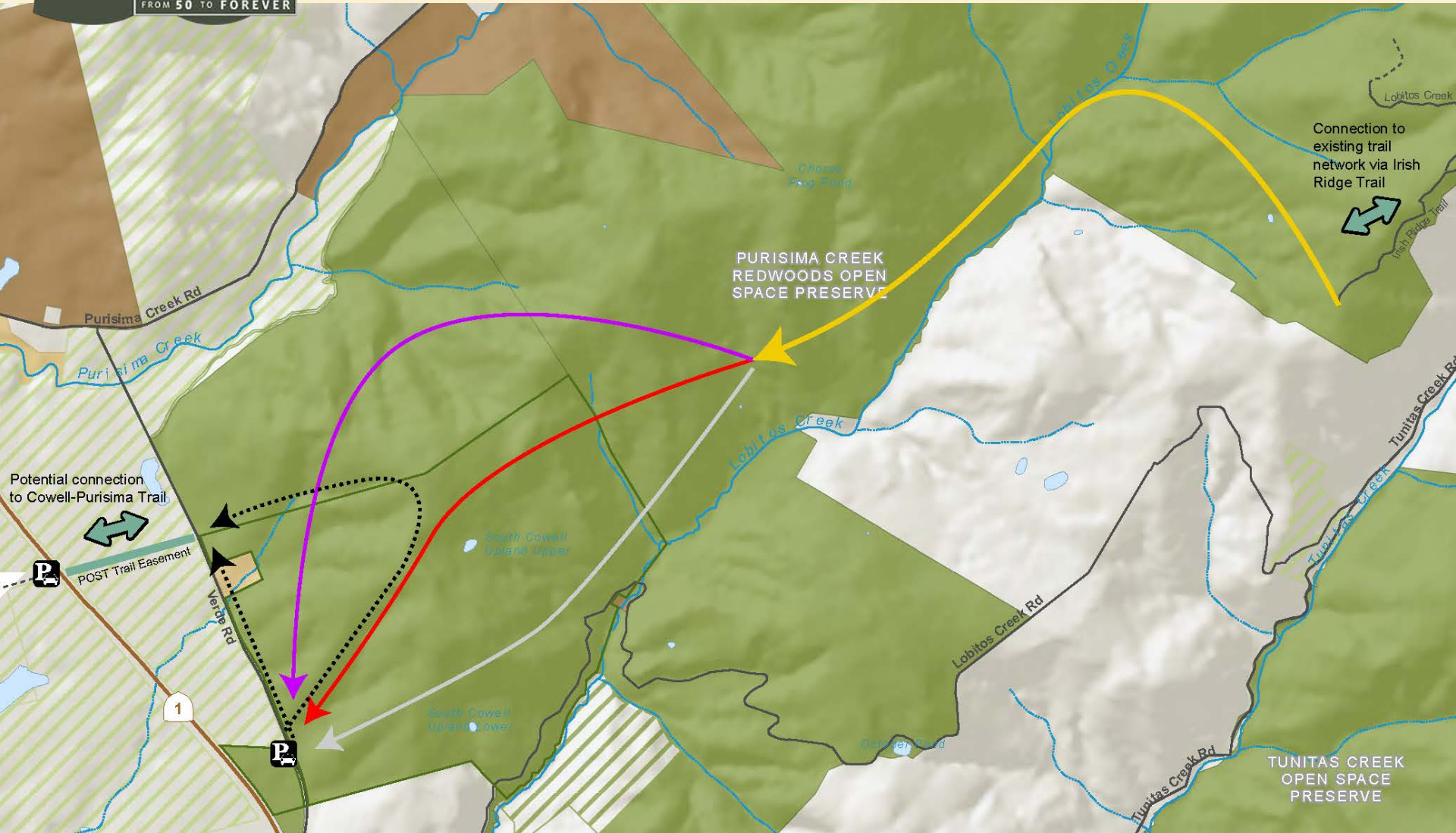
PURISIMA-TO-THE-SEA TRAIL | OPPORTUNITIES & CONSTRAINTS ANALYSIS



FIGURE 4 | SAFETY ATTRIBUTES



Purisima-to-the-Sea Trail Scouting





Next Steps

- Complete technical assessments and continue trail scouting of the trail alignment alternatives
- Develop draft conceptual parking design alternatives
- Conduct additional public and stakeholder outreach

Milestone	Schedule
Preferred trail alignment & draft conceptual parking area alternatives	Spring 2022
Preferred trail alignment & revised conceptual parking area alternatives	Winter 2022/23

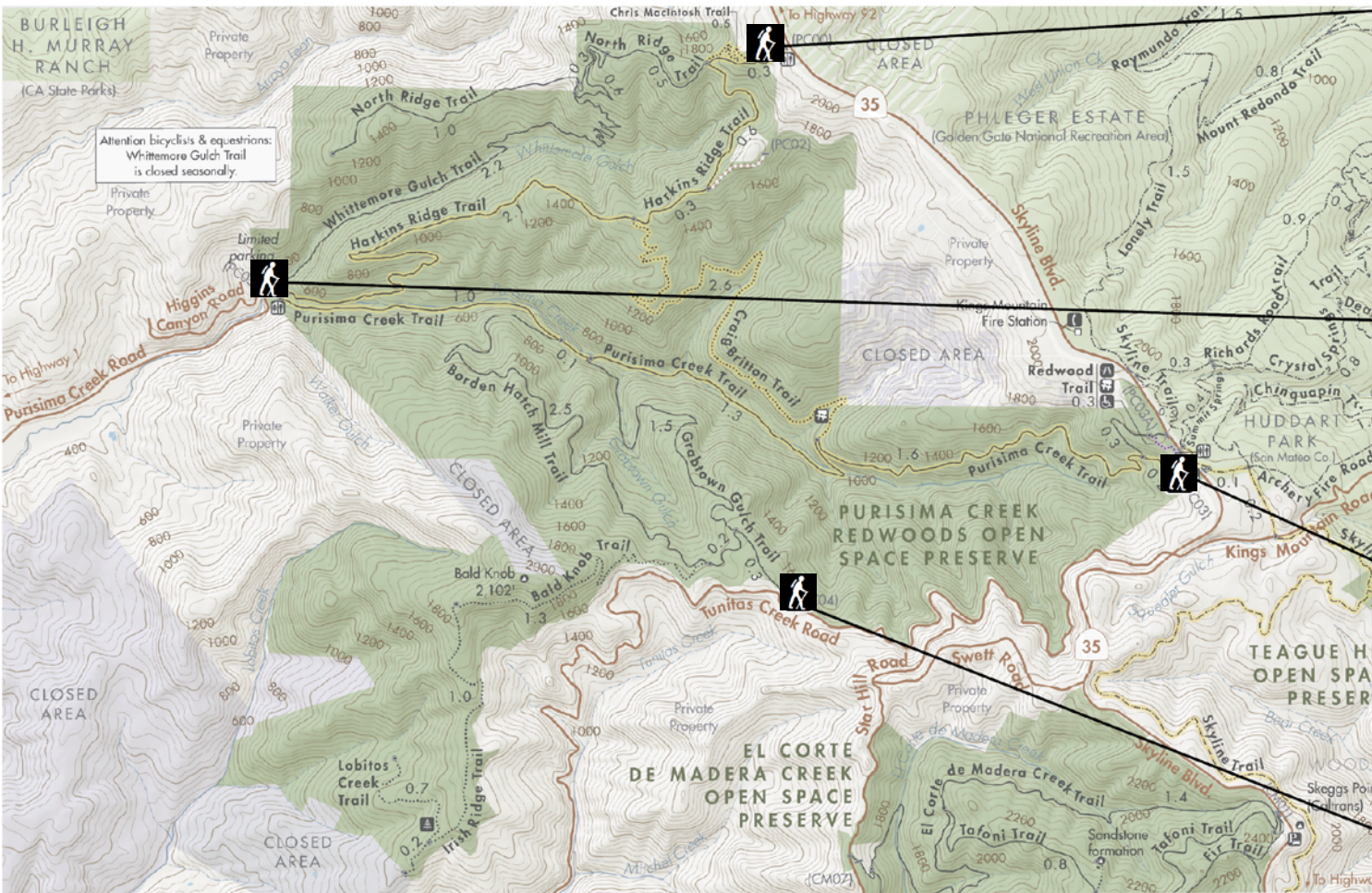


MIDPENINSULA REGIONAL OPEN SPACE DISTRICT

Purisima Creek Multimodal Access Study



Purisima Trailheads & Access



Attention bicyclists & equestrians:
Whittemore Gulch Trail
is closed seasonally.



North Ridge
30 Standard 1 ADA



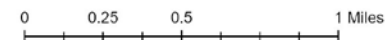
Purisima Creek Road/Higgins Canyon
7 Standard 1 ADA



Redwood Trail
14 Standard + roadside parking spaces



Grabbtown Gulch
Roadside Parking - 10 to 20 Spaces





Purisima Multimodal Project Purpose

- Evaluate existing **parking resources and access** to the Preserve
- Understand **visitor behavior and visitation patterns**
- Identify strategies to **reduce parking demand, manage parking resources and mitigate negative impacts of overflow parking**
- Identify ways to **improve multimodal access** to the Preserve and during peak times of year
- Improve **internal visitor circulation**
- Improve **pedestrian safety** in the Preserve and on neighboring roadways




How Will We Get There?



🌿 Data Collection



🌿 Public Engagement



Midpeninsula Regional
Open Space District

Purisima Creek Redwoods Preserve Visitor Survey

Take this survey on your phone!
Scan the QR code below with your
camera app to link to the online
survey.

Today's Date

Parking Lot/Trailhead Location

**Please answer the following questions based on your trip to
the Preserve today or your most recent trip.**

Unless otherwise noted, please choose only one response per question.

1. Who are you traveling with?

<input type="checkbox"/> Alone	<input type="checkbox"/> Family	<input type="checkbox"/> Organized Group (tour, running)
<input type="checkbox"/> Friends	<input type="checkbox"/> School	<input type="checkbox"/> Other (please specify)

2. How many people are typically in your group when visiting the Purisima Creek Redwoods Preserve?

<input type="checkbox"/> I am alone	<input type="checkbox"/> 2	<input type="checkbox"/> 3
<input type="checkbox"/> 4	<input type="checkbox"/> 5	<input type="checkbox"/> Other (please specify)

3. Did you have any problems with getting to the Preserve or finding parking today?

No Yes (please specify which lot or road)

🌿 Surveys (In Person & Virtual)



High Demand for Parking

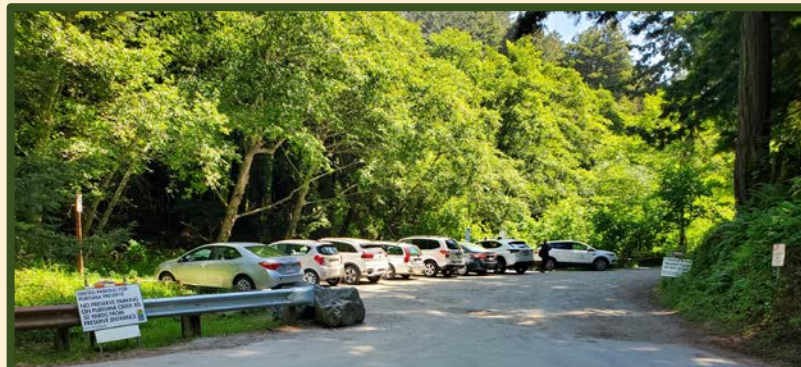
Demand is highest during **weekend mornings**.

Demand is highest at the **North Ridge** and **Purisima Creek Road** lots.

Parking duration averages **1-2 hours** with **frequent turnover**.



Purisima Creek Road / Higgins Canyon Road



Purisima Creek Road



Redwood Trail



North Ridge



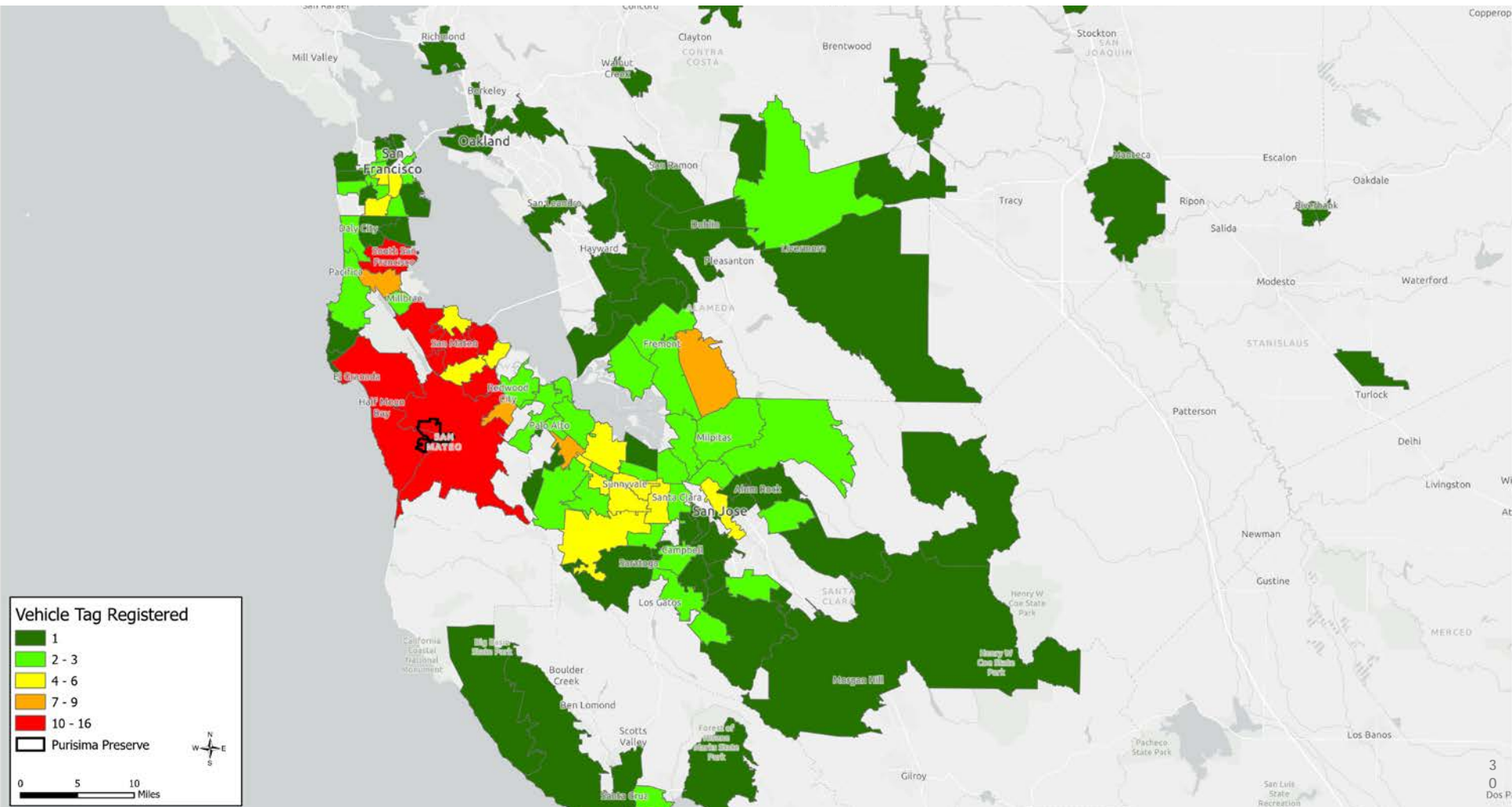
Grabtown Gulch



Where Do Visitors Come From?

Parked Vehicle Tag Registered Home Zip Codes

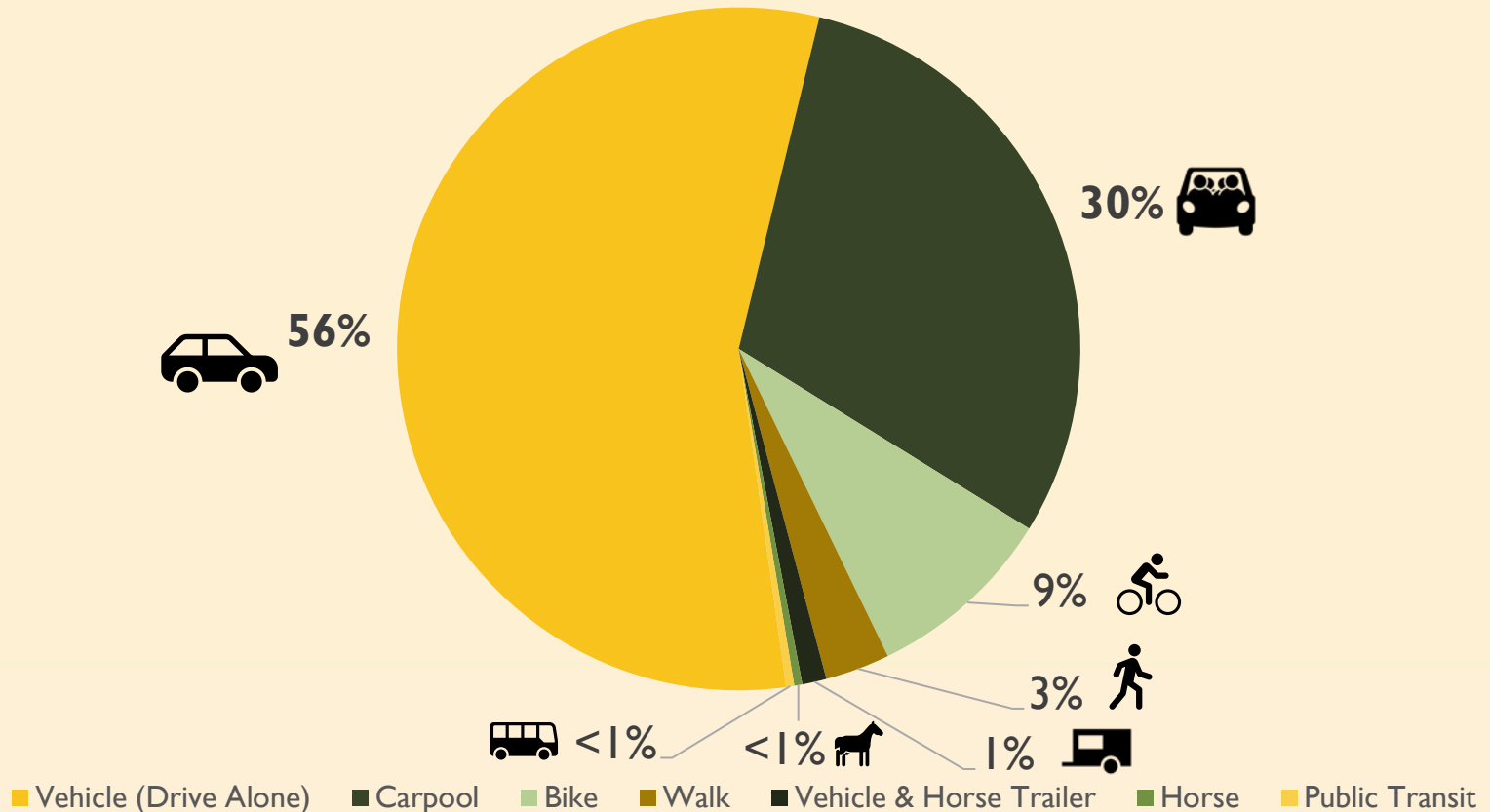
Most visitors come to Purisima from the Peninsula, particularly San Mateo and Half Moon Bay.





How Do Visitors Travel to Purisima?

The majority of visitors **drive** to Purisima, either alone or in a carpool.

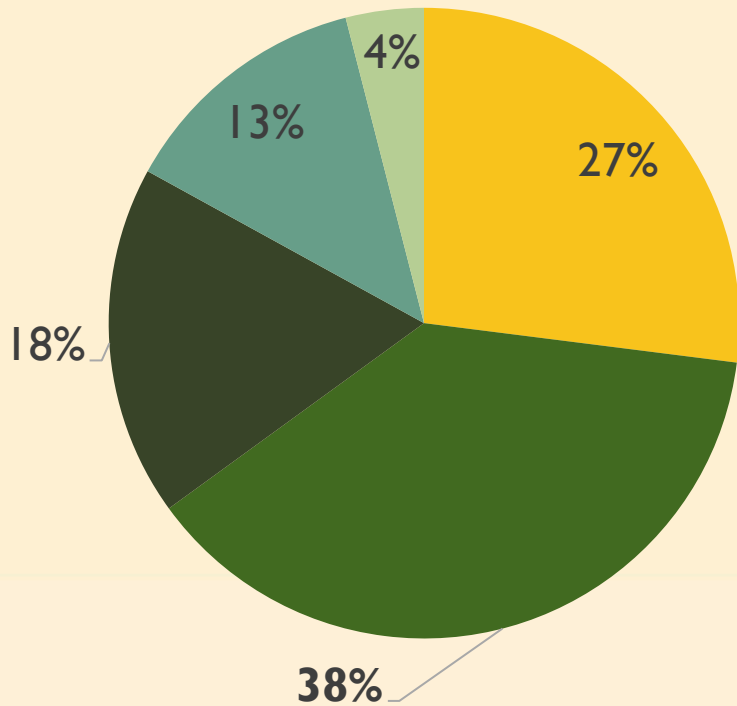




Do People Carpool to Purisima?

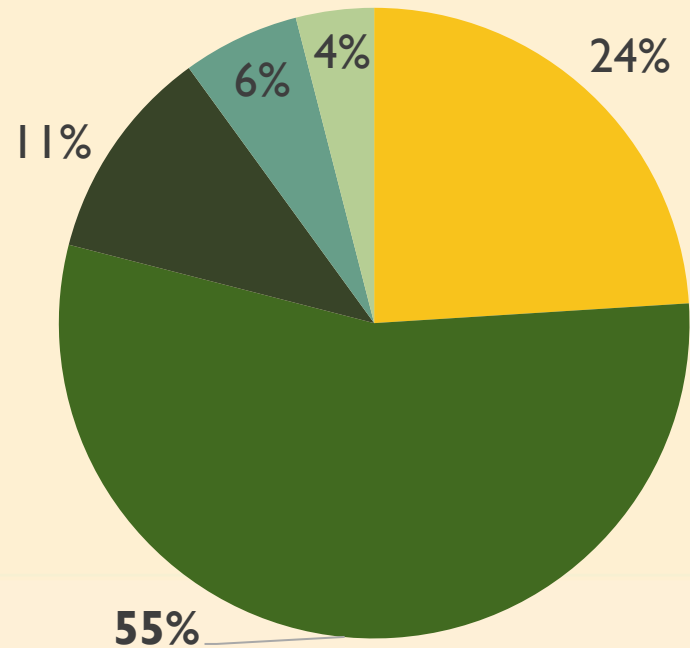
Approximately one quarter of visitors drive **alone** to Purisima.
More **carpool**.

August 11 (Wednesday)



People/Car 1 2 3 4 5

August 28 (Saturday)

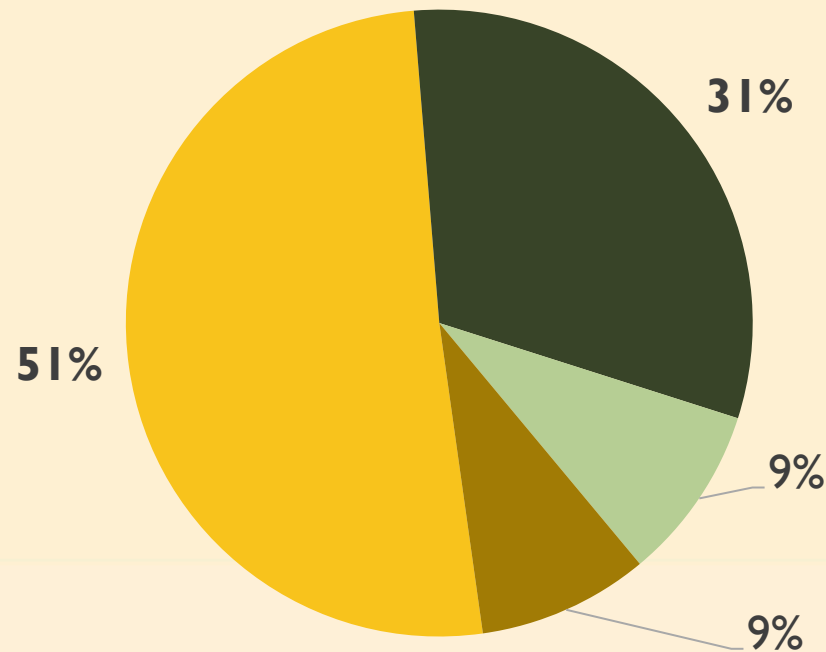


People/Car 1 2 3 4 5



Which Access Point Do Visitors Prefer?

Over half of visitors would prefer to access Purisima via **Purisima Creek Rd/Higgins Canyon** if parking/access barriers were not a factor.

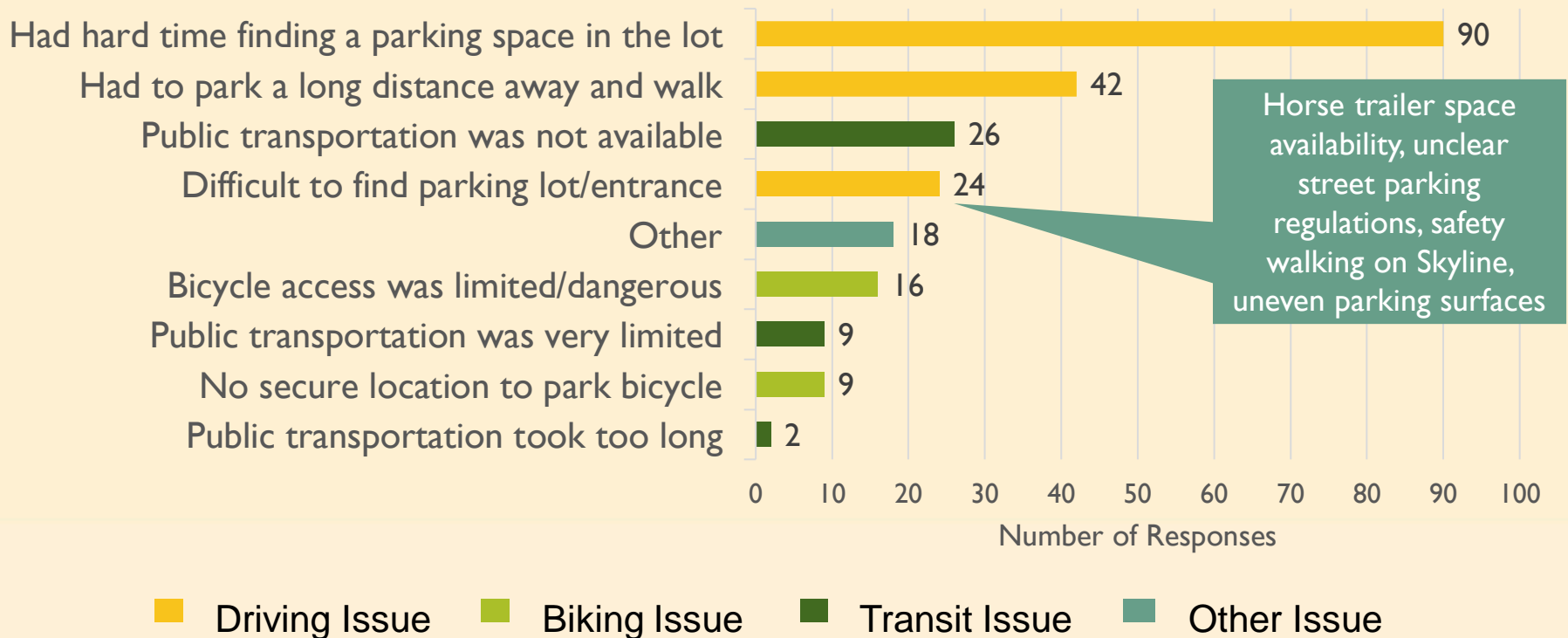


■ Purisima Creek Rd/Higgins Canyon ■ North Ridge ■ Grabtown Gulch ■ Redwood Trail



What Difficulties Do Visitors Experience?

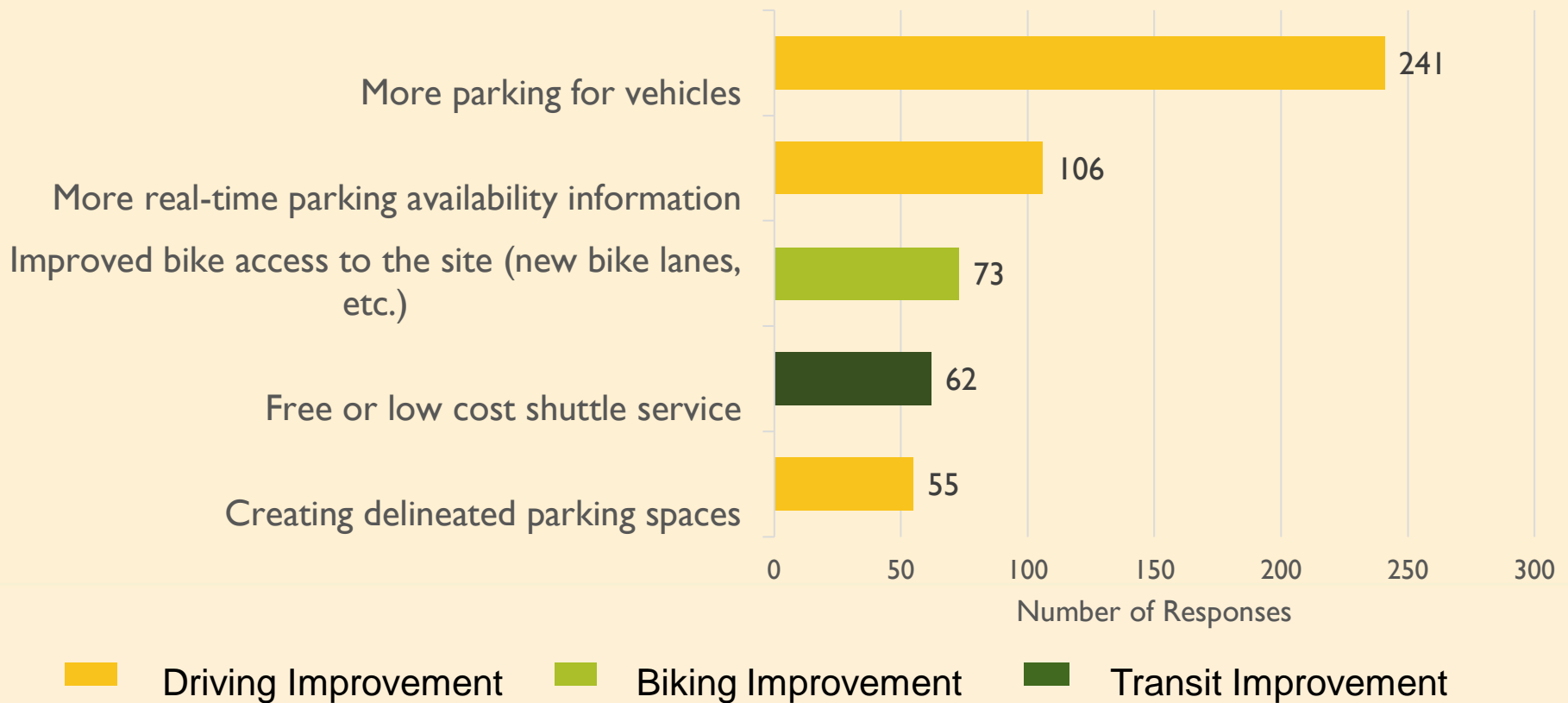
Drivers struggle to find parking. **Cyclists** struggle with safety. **Transit users** struggle with service availability.





What Improvements Would Visitors Like to See?

Visitors' top 5 potential improvements would **improve parking** and **expand multimodal options**.





What Improvements May Be Considered?

- Traveler Information/Wayfinding
- Technology
- Transit / Shuttle Bus Service
- Parking Capacity Enhancements
- Parking Management
- Demand Management
- Bicycling
- Education / Outreach
- Policy





What's Next

- ✿ March 15, 2022 Planning and Natural Resources Committee Meeting

- ✿ Continued Engagement and Outreach
 - Partner agencies
 - Stakeholders
 - Members of the public

- ✿ Spring 2022 Data Collection and Surveys



Project Contact Information





Stay Connected with Purisima Projects

Sign up for Purisima Creek Redwoods updates at: <https://www.openspace.org/contact-us>

CONTACT US

ADMINISTRATIVE OFFICE HOURS

Midpen has closed our main office at 330 Distel Circle in Los Altos in compliance with county health official orders to shelter at home.

Staff are working from home and remain available via telephone or voicemail (650-691-1200) and email (info@openspace.org or individual emails) during regular business hours of 8:30 a.m. to 5 p.m., Monday through Friday.

Midpeninsula Regional Open Space District

Administrative Office

330 Distel Circle

Los Altos, CA 94022-1404

You can also reach us by phone: 650-691-1200; fax: 650-691-0485 or e-mail: info@openspace.org

JOIN OUR EMAIL LIST!

Stay up-to-date with Midpen news, events and projects. [Sign up for our email list](#) and select your interests to automatically receive email newsletters and notices.

SIGN UP FOR OUR E-NEWSLETTER

Get the latest information about Midpen preserves, outdoor activities, upcoming events and conservation news.

SIGN UP →





Staff Contacts

- Purisima Creek Multimodal Access Study
Tina Hugg, Senior Planner
thugg@openspace.org
Tyler Smith, Planner II
tsmith@openspace.org
- Hwy 35 Multi-Use Trail Crossing and Parking Study
Aaron Peth, Planner III
apeth@openspace.org
Scott Reeves, Senior Capital Project Manager
sreeves@openspace.org
- Purisima-to-the-Sea Trail and Parking Study
Gretchen Laustsen, Senior Planner
glaustsen@openspace.org



Thank You!

