

San Mateo County Parks Department

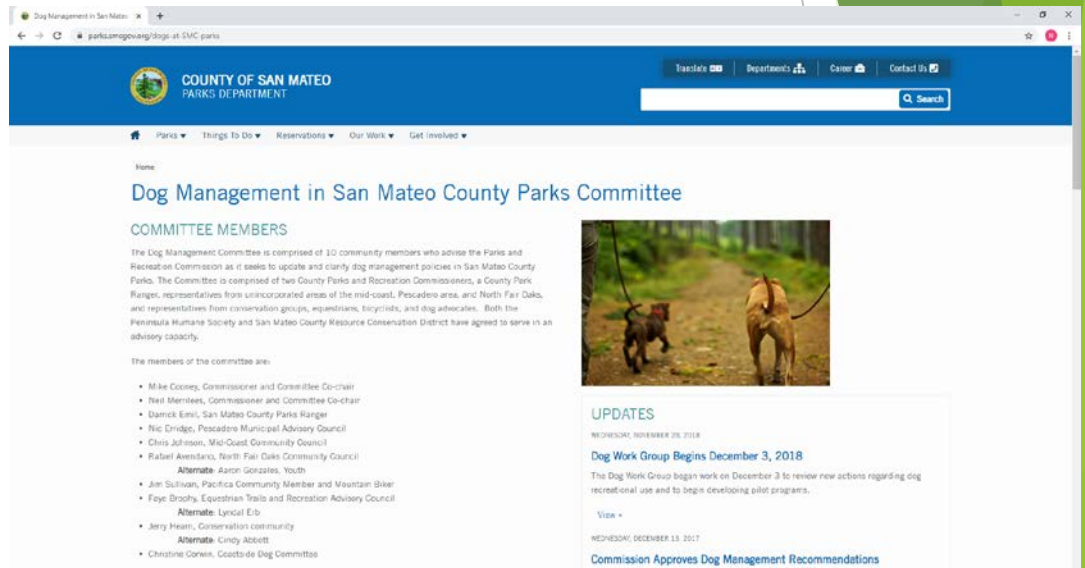
Off-Leash Dog Recreation Pilot Program

January 26, 2022

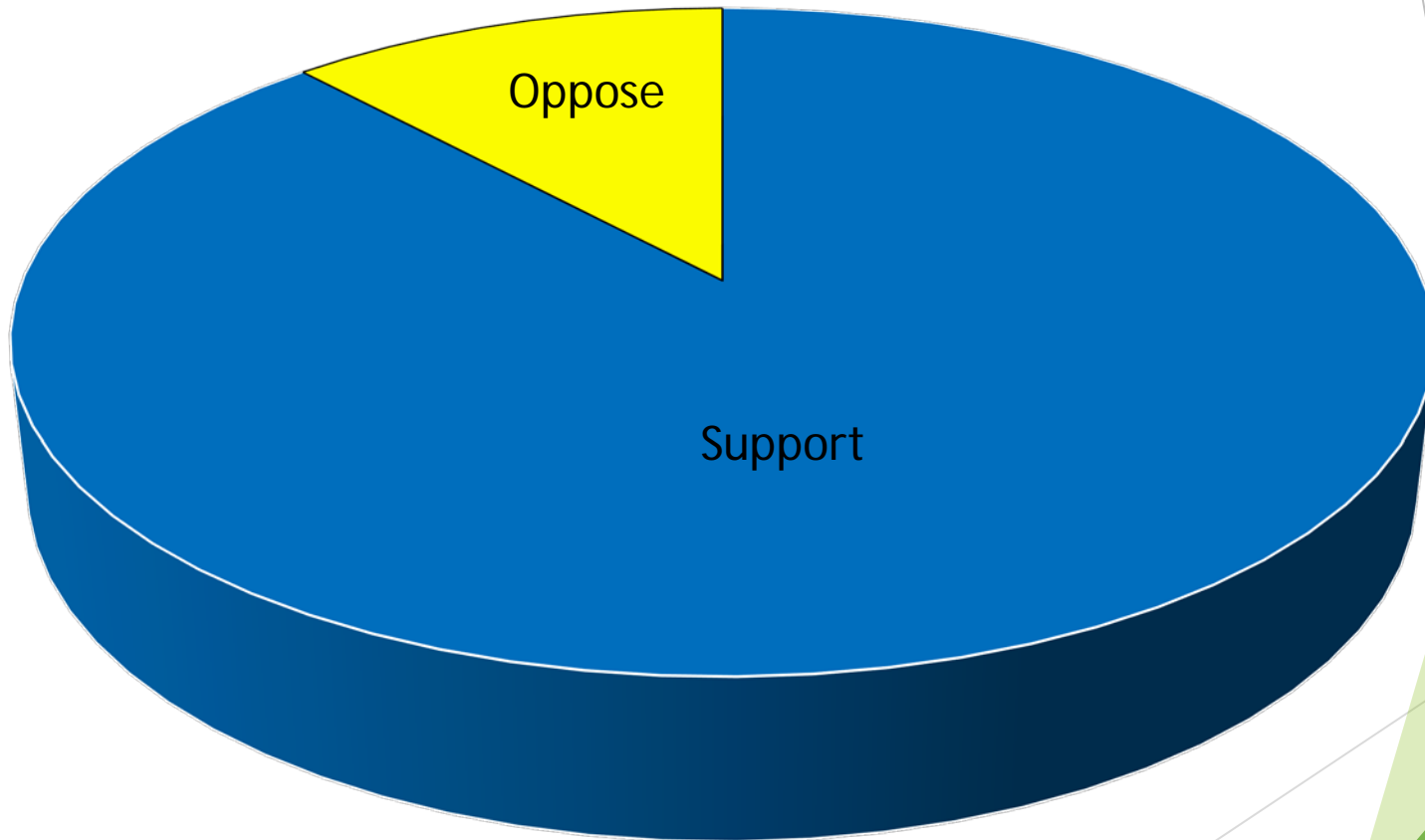


Process

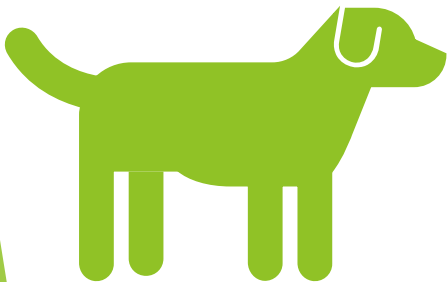
- Monthly Work Group meetings
- All meetings were open to the public
- Public comments were accepted
- Notes and agendas are posted to the Department's website



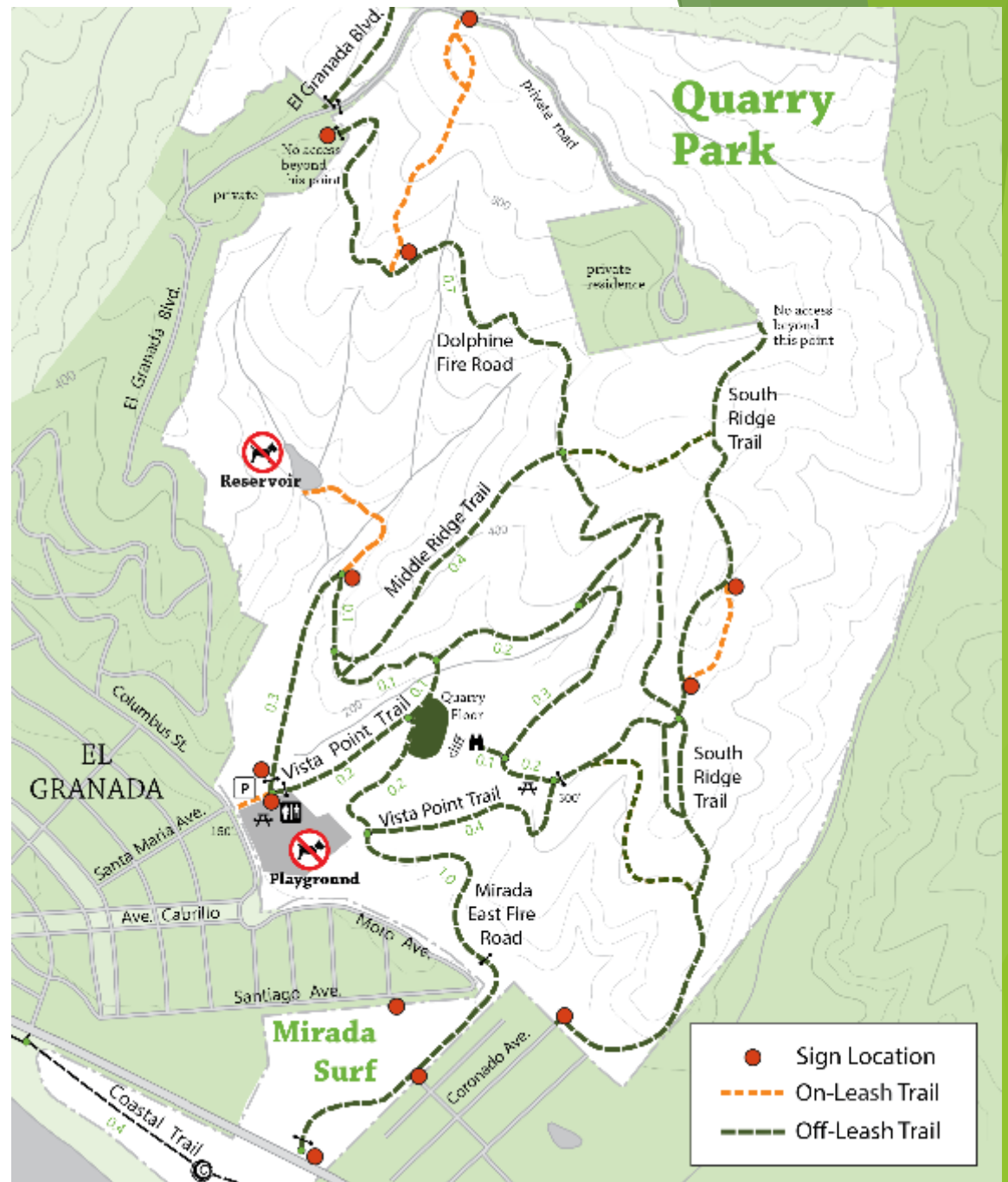
Work Group Public Feedback



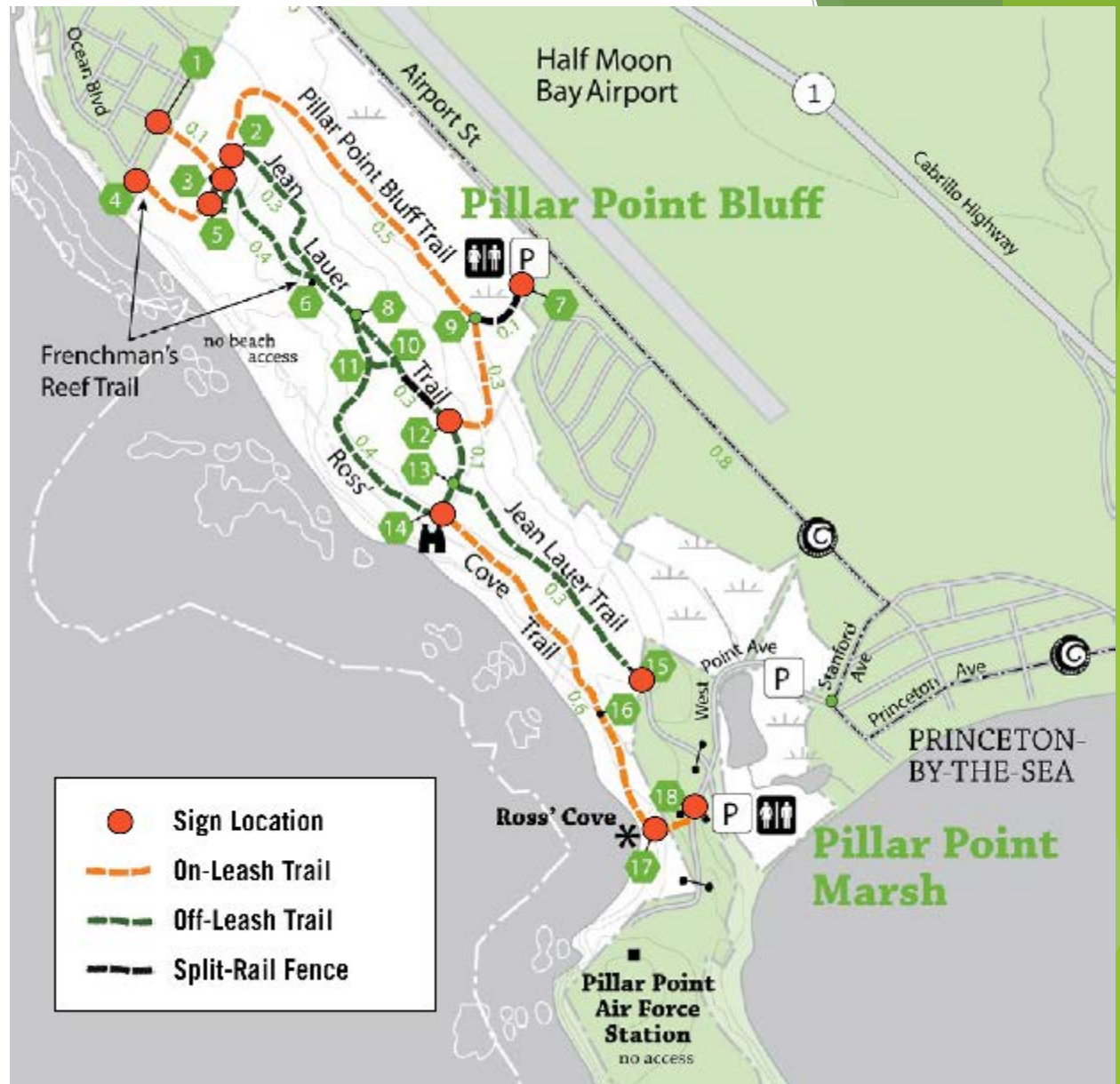
Off-Leash Dog Recreation Pilot Program



Quarry Park



Pillar Point Bluff



Chapter 3.68

- ▶ Off-leash dogs must be under voice and sight control:
 - ▶ Voice and sight control means the owner/handler must be in control of dog(s) at all times and must be able to recall and leash dog(s) at any time.
 - ▶ Owner/handler must have a leash for each dog under owner/handler control.
 - ▶ Dog must return immediately when called (maximum of 10-second return time).
- ▶ Dogs must remain on designated and signed trails, within view and earshot, and no more than 25 feet away from owner/handler.
- ▶ Dogs must be on-leash in developed areas (i.e. near traffic, parking lot, lawn or play field deck, picnic areas, etc.).
- ▶ No more than two dogs off-leash per owner/handler.

Chapter 3.68 Cont.

- ▶ Dogs are presumed to NOT be under control when they:
 - ▶ Threaten, harass, chase or otherwise display aggression towards any person, animal or wildlife.
 - ▶ Display threatening behavior.
 - ▶ Physically harm people directly or indirectly by their actions.
 - ▶ Touch or jump on other park users who have not invited or engaged in interaction with the dog.
 - ▶ Do not return when called (maximum of 10-second return time).
- ▶ Owner/handler must have physical control of dog(s) when approaching or being approached by park users not also engaged in off-leash dog recreation.

Initial Study/Mitigated Negative Declaration

- ▶ The purpose of the Initial Study/Mitigated Negative Declaration is to evaluate the potential environmental impacts associated with the proposed amendments to the County's ordinance code regarding dog recreation and the proposed Pilot Program and Adaptive Management Plan
- ▶ Most impacts were determined to be less than significant
- ▶ Nine (9) impacts will be less than significant after mitigation measures are implemented
- ▶ No impacts were identified as potentially significant

Dog Recreation Whitepaper

- ▶ Biologist conducted site visits, used Biological Resource Assessments, and completed desktop analysis to identify plant and wildlife species present at Pillar Point Bluff and Quarry Park
- ▶ Published research literature was reviewed, analyzed, and summarized
- ▶ Findings:
 - ▶ Both human and dog recreation have an impact on wildlife
 - ▶ Dogs off-leash cause disturbance to wildlife for various bird species, mountain lions, bobcats, coyotes, deer, and elk; less evidence was found that dogs kill wildlife
 - ▶ Dog waste can contribute to water quality impairment
- ▶ The lack of comprehensive and conclusive scientific evidence regarding the impacts of dogs off-leash supports the premise of managing dogs off-leash with an adaptive management plan

Adaptive Management Plan

- ▶ The Adaptive Management Plan will ensure any environmental impacts that may be created by off-leash dog recreation are minimized to the greatest extent possible
- ▶ Eight (8) indicators will be monitored to measure compliance and any environmental impacts that may occur
- ▶ Department will conduct regular monitoring to document compliance rate and identified environmental impacts
- ▶ All data will be posted to the Department's website

Indicators

- ▶ 1. Presence of dog waste
- ▶ 2. Fecal coliform levels
- ▶ 3. Harassment of wildlife
- ▶ 4. Dog entry into sensitive areas
- ▶ 5. Dogs traveling off trail
- ▶ 6. Leash compliance for on-leash trails
- ▶ 7. Interactions between other visitors and dogs
- ▶ 8. Changes in park visitation in response to visitors with off-leash dogs

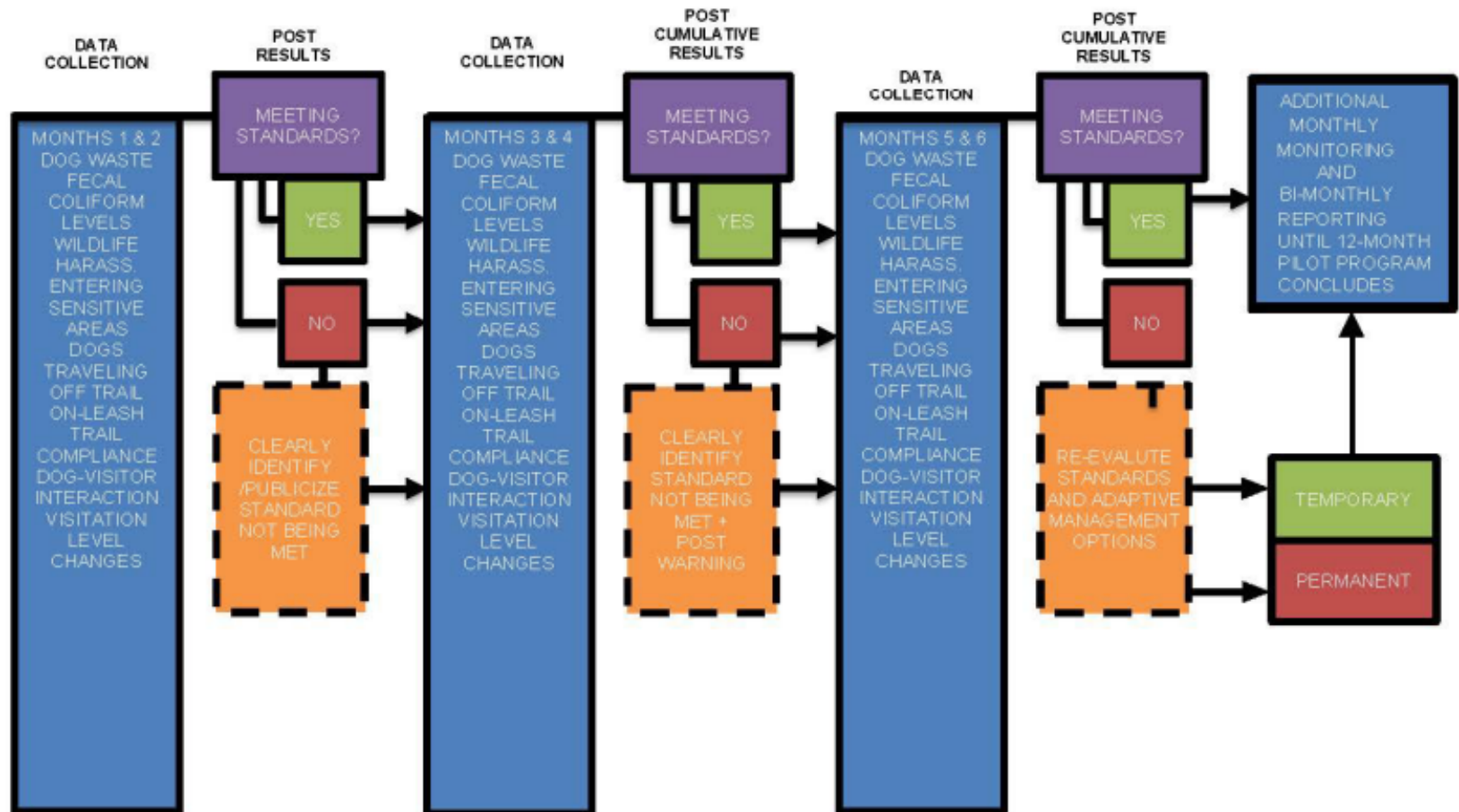
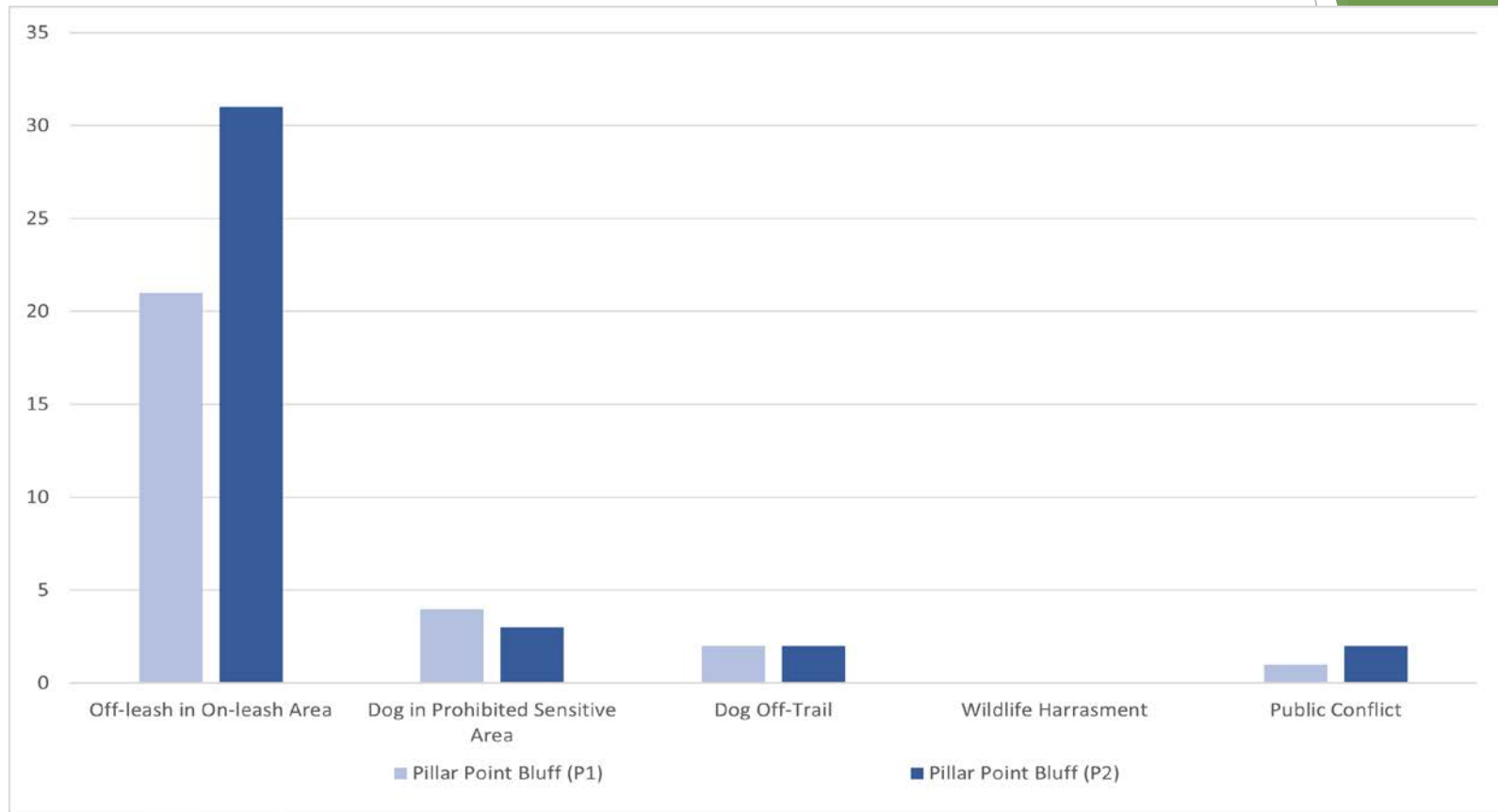


Figure 4. Adaptive Management Decision Flow Chart

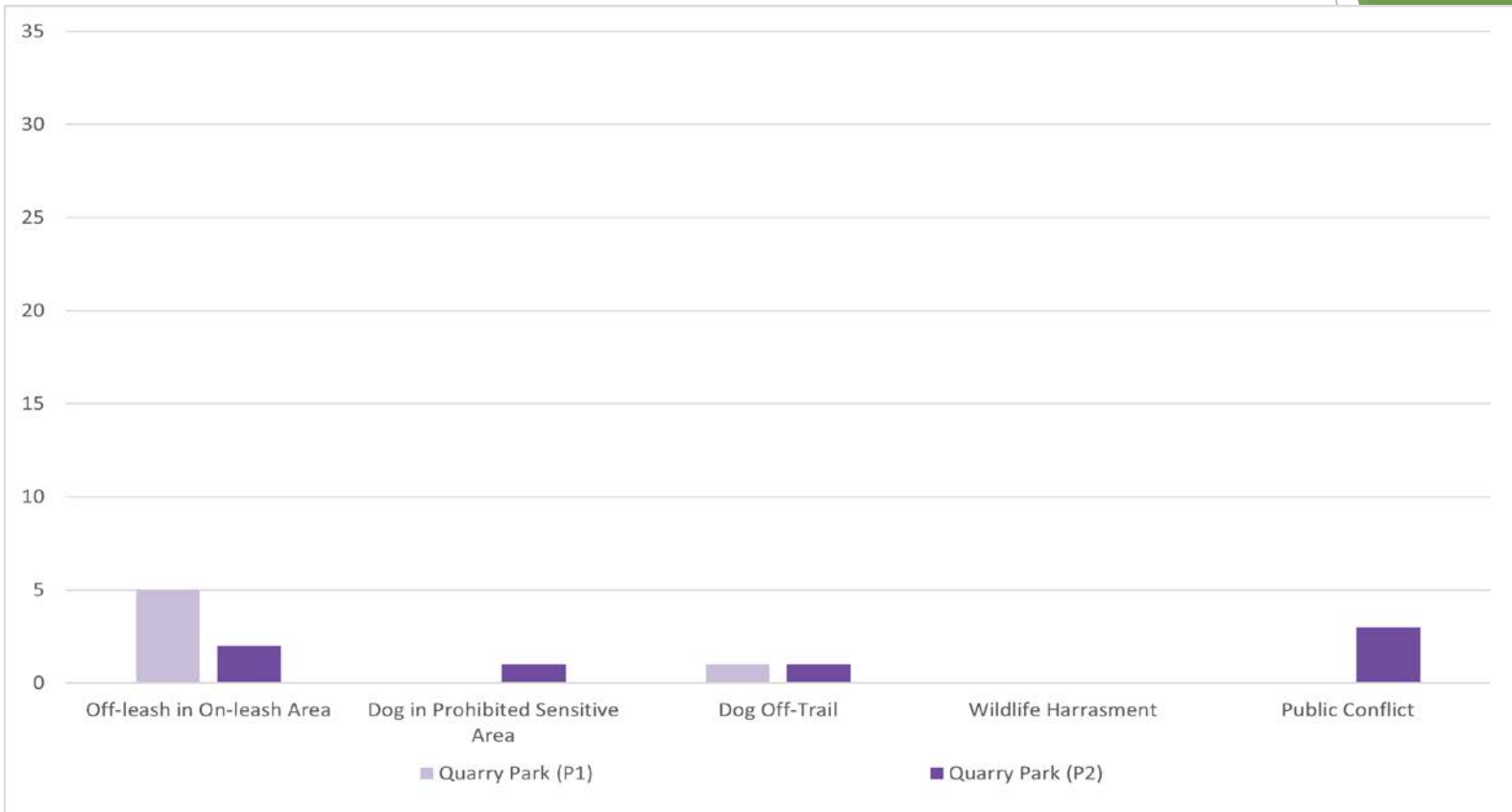
Baseline Data

		July	August	September	October	November	December
Pillar Point Bluff	Presence of Dog Waste	65 instances	24 instances	29 instances	42 instances	24 instances	19 instances
	Interactions with Dogs and Visitors	0 instances	0 instances	1 instance	2 instances	0 instances	0 instances
		July	August	September	October	November	December
Quarry Park	Presence of Dog Waste	97 instances	27 instances	33 instances	26 instances	16 instances	16 instances
	Interactions with Dogs and Visitors	0 instances	0 instances	0 instances	0 instances	2 instances	1 instance

Pillar Point Bluff



Quarry Park



Baseline Data

	Pillar Point Bluff		Quarry Park		Total	
	Monitoring Period 1		Monitoring Period 1			
Total visitors overall	1,037		589		1,626	
	Total	% of visitors overall	Total	% of visitors overall	Total	% of visitors overall
Visitors without dogs	786	75.8%	338	57.4%	1,124	69.1%
Visitors with dogs	251	24.2%	251	42.6%	502	30.9%
	Monitoring Period 2		Monitoring Period 2			
Total visitors overall	955		546		1,501	
	Total	% of visitors overall	Total	% of visitors overall	Total	% of visitors overall
Visitors without dogs	688	72.0%	306	56.0%	994	66.2%
Visitors with dogs	267	28.0%	240	44.0%	507	33.8%

Off-Leash Dog Recreation Pilot Program Timeline

August 2021

- IS/MND Public Review/Comment Period Closes

November 2021

- Parks Department to present the Pilot Program, Ordinance Amendment, and IS/MND to the Board of Supervisors for consideration

Dec. 2021/Jan. 2022

- Planning Commission hearing for issuance of a Coastal Development Permit

Jan./Feb. 2022

- Commencement of Pilot Program*

* The Coastal Development Permit can be appealed to the Board of Supervisors and Coastal Commission. Should the CDP be denied, the Pilot Program would need to be re-scoped or abandoned.

QUESTIONS?