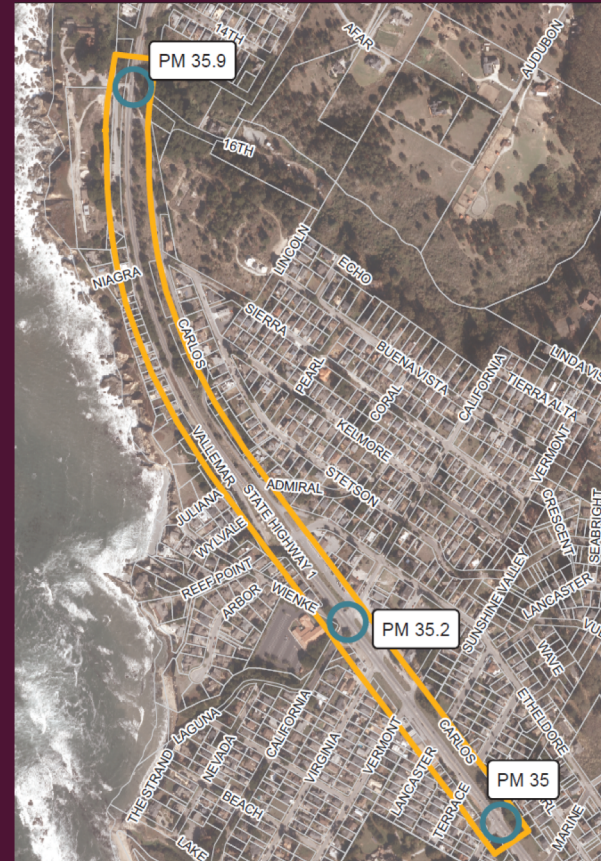


MOSS BEACH SR-I CONGESTION & SAFETY IMPROVEMENTS PROJECT

TRANSPORTATION AUTHORITY'S
2021 MEASURE A/W HIGHWAY PROGRAM
CALL FOR PROJECTS



REQUEST

- For the Midcoast Community Council to provide a letter of support for Planning and Building's grant application to the 2021 Transportation Authority's Highway Program Call for Projects to fund a Project Study Report-Project Development Support (PSR-PDS) Project Initiation Document for the Moss Beach corridor

2021 HIGHWAY PROGRAM CALL FOR PROJECTS

- Administered by the San Mateo County Transportation Authority
- Focus of program is to reduce traffic congestion and improve throughput and safety
- Up to \$100 million available countywide from Measure A (1998 half-cent sales tax, reauthorized in 2004) and Measure W (2018 half-cent sales tax)
- To be eligible, project must be included in the TA's Capital Improvement Program (<https://www.smcta.com/Programs/Highway.html>)
- Project sponsor must provide a minimum 10% funding match
- Applications due 9/24

https://www.smcta.com/Projects/Call_for_Projects/2021_Highway_Program_Call_for_Projects.html

CALTRANS MAJOR PROJECT PHASES

Planning

Project Initiation Document

Project Approval and Environmental Document

Plans, Specifications, and Estimates

Acquire ROW, Approvals, Permits

<https://dot.ca.gov/-/media/dot-media/programs/sustainability/documents/2011-how-caltrans-builds-projects-a11y.pdf>

WHAT IS A PSR-PDS PID?

- The Project Study Report-Project Development Study project initiation document allows a local project sponsor (example: the County) to gain approval for a project study on a Caltrans-owned facility to move into the "Project Approval and Environmental Document" phase, which allows for future programming
- Allows for Caltrans and partners to develop consensus on the project purpose and need and study alternatives in more detail (e.g., environmental, design, traffic, stormwater, right-of-way, utilities, and other impacts)
- Key outcome is to estimate the support costs that will be needed for the Project Approval & Environmental Document phase to support programming of funds
- Must follow Caltrans' specified format with required information, and development requires Caltrans' oversight

<https://dot.ca.gov/-/media/dot-media/programs/design/documents/pdpm-appendixes-ally.pdf>

PROPOSED GRANT APPLICATION

- Request funding from Highway Program to develop a **Project Study Report-Project Development Support (PSR-PDS)** Project Initiation Document (PID) for **Moss Beach SR-I Congestion & Safety Improvements Project** (16th Street to Cypress Avenue)
 - Caltrans oversight and consultant to prepare PSR-PDS
 - Study different alternatives at 16th Street, California Avenue, and Cypress Avenue (signals, roundabouts, modified striping)
 - Will consider constraints (like utilities) and preferences (like need for Parallel Trail) identified through previous planning studies in studying alternatives

WHY THIS PROJECT, FOR THIS SOURCE, NOW?

- Eligibility
- Call for projects happens every few years; next opportunity will be in 2023 or 2024
- Early action identified in Connect the Coastside
- Will help address concerns identified by stakeholders during planning process, including desire for more details and understanding of constraints
- Builds off other past planning projects funded by TA (2015 Preliminary Planning Study)

LETTER CONTENTS

- Describes MCC's involvement with Connect the Coastside's development
- Shares high-level feedback from Midcoast stakeholders received on project (intersection controls in Moss Beach)
- Supports County taking next phase to develop Project Study Report-Project Development Study
- Affirms interest in future project involvement if County is awarded funding



THANK YOU

QUESTIONS?

