

El Granada / Quarry Park
Prior to hiring a
Wildfire Resiliency Consultant

September 22, 2021

Summary of Key RFP Points

- Key work elements
 - Understanding of wildfire scenarios
 - Develop action plans and cost estimates
 - Address short and long term actions on private and public lands
 - Include a focus on eucalyptus management
- Roles
 - RCD is the project manager
 - Key partners to provide feedback and ensure inclusion of local expertise include:
 - San Mateo County
 - CAL FIRE
 - Midcoast Community Council

Winds Drive Wildfire Scenarios

Orange Arrows – prevailing winds from northwest to southeast

Blue Arrows – seasonal strong offshore Diablo winds



Two Wildfire Scenarios

DIABLO WINDS

Per Cal Fire Forester Rich Sampson: In the fall when hot, dry Diablo winds occur, they are a multiplier of the wildfire risk, causing a danger comparable to the Oakland Fire.

MCC VIDEO: <https://youtu.be/G77e4ugxJA4?t=3013>

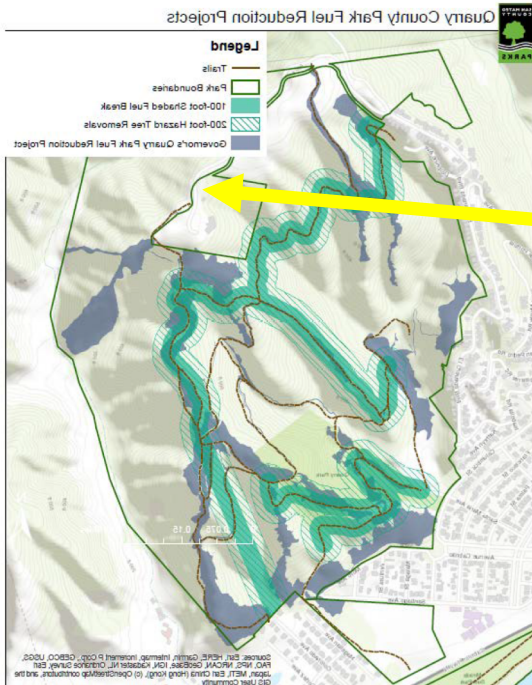
PREVAILING WINDS

Parks Director Nicholas Calderon cites prevailing winds lead to Cal Fire highlighting a constant wildfire risk that increases as the area becomes drier in the fall. (personal communication)

SUMMARY – Governor’s Plan to 5 Year Plan

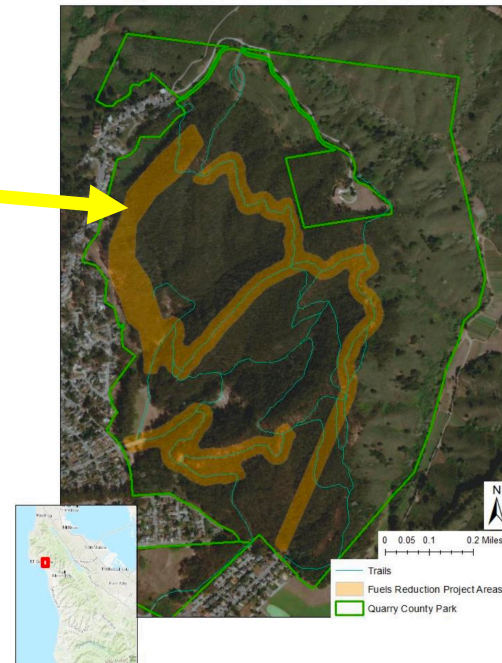
- Governor’s 2019 Fuel Break program – Per Rich Sampson, 20 acres between El Granada Blvd and Quarry Park are dropped because of difficult to access this area. A later, more complex project would be needed to do this work
- Project 16 (Quarry Park and Mirada East Fire Road Fuel Reduction) in the Wildfire Fuel Management Program 2021-2026 Projects was originally noted as unfunded and contained work along El Granada Blvd.
- The Coastal Conservancy proposed funding a project based on shovel ready projects. The 2021-2026 Project Plan #16 was adjusted to meet the criteria of the Coastal Conservancy funding.

New #16



Original #16

Quarry County Park: Create and Maintain a Shaded Fuel Break Along Fire Roads in Quarry Park and Mirada East



Going Forward

- **Wildfire Scenarios**

I am confirming that the RCD project has complete freedom to (and will) independently review the area and assess risks, unencumbered by past projects.

– RCD Director Kellyx Nelson

- **Long Term Funding**

I am prepared to consider a large bond measure (0.5B) to address resiliency issues for San Mateo County –
Supervisor Don Horsley

(April 14, 2021 MCC Meeting - <https://youtu.be/difiT7m3vpo?t=4070>)

El Granada Median Eucalyptus Removal Project – Khoa Vo

- 2021 – 500K for Eucalyptus in the Medians
 - Update on removal of eucalyptus on selected medians in El Granada
 - Take away learning from the project
 - Community opportunity for a rehabilitation project on C2
- Next Steps

Current / Recent Projects in Quarry Park

- Governor's 2019 Emergency Shaded Fuel Break
- 2020 - Work
- 2021 – Grant from Coastal Conservancy
- Next Steps