


Montara Jubata Grass Removal Project



2019 CDFA Noxious Weed
Grant



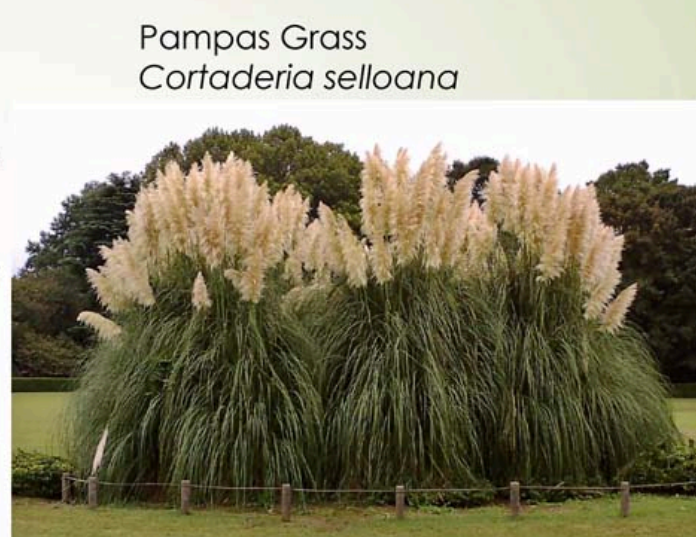
Jubata Grass
Cortaderia jubata

- CA introduction unknown
- **Seed produced asexually**
- Purple inflorescence, culms extend 3-6ft above tussock
- All of California coast <2,600 ft

Pampas Grass
Cortaderia selloana

- 1848 Santa Barbara horticultural trade
- **Seed produced sexually, need male + female plants**
- Female: White inflorescence, culms 0-3 ft above tussock
- More common Santa Barbara to San Diego

Both species are early colonizers of **wet, sandy soils**. But can tolerate other soils types



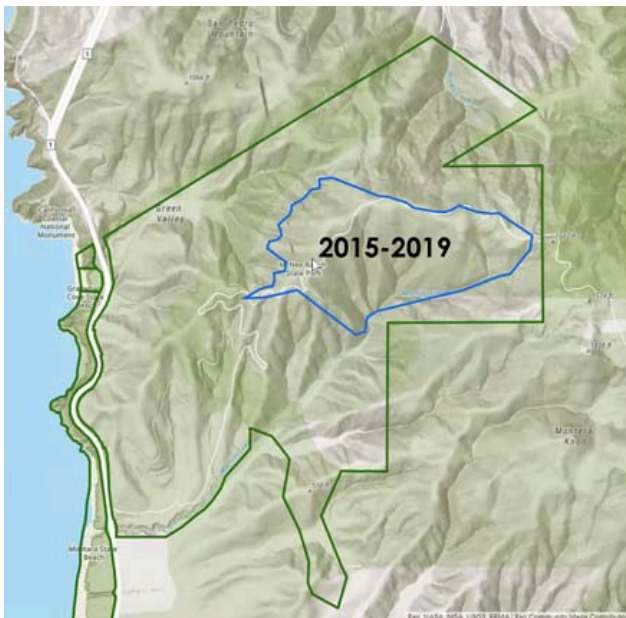
Pampas Grass
Cortaderia selloana

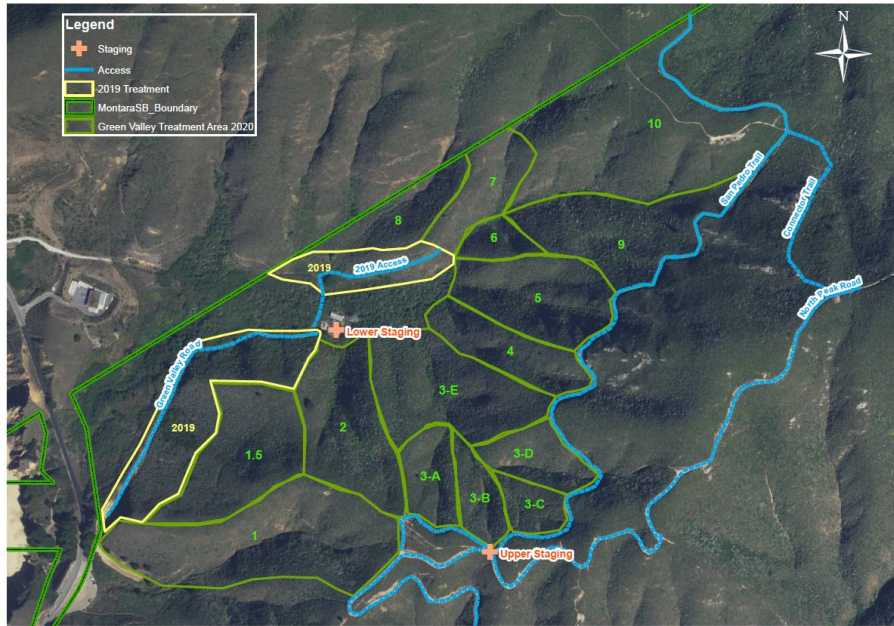
- More common Santa Barbara to San Diego

Both species are early colonizers of **wet, sandy soils**. But can tolerate other soils types

Montara Mountain

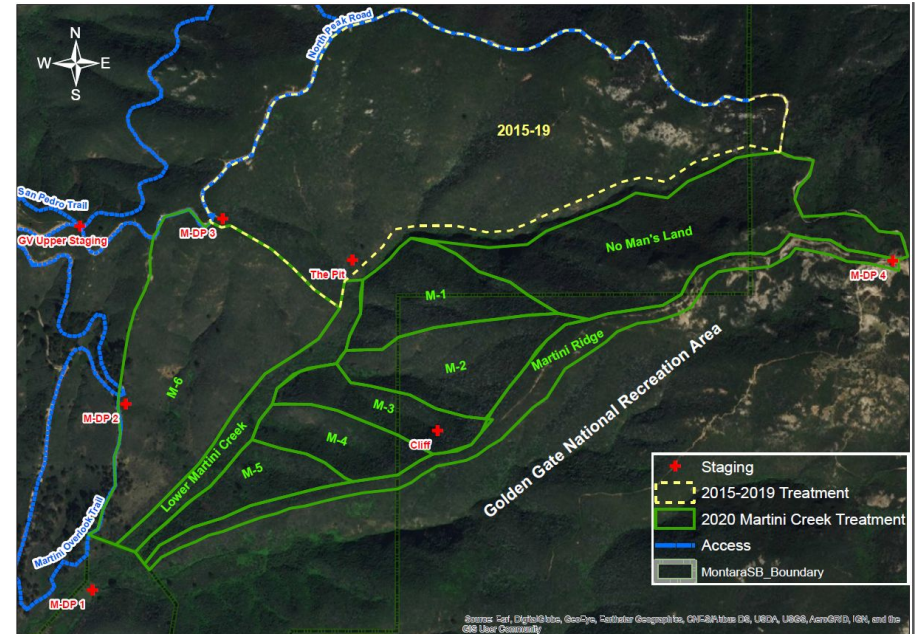
- Northern spur SC Mountains
- Logistical nightmare for roads
- Degraded granite= good drainage, low-nutrient
- Heavy marine influence= Cloud forest
- Jubata + Cape ivy quickly colonizing





Montara Jubata Grass Removal 2020

0 350 700 1,400 Feet



2020 Martini Creek Jubata Treatment

0 0.125 0.25 0.5 Miles