

# El Granada Wildfire Risk “Scoping Study”

## MCC Discussion of Questions and Next Steps

July 27, 2022

### **Discussion Outline:**

- Rapid overview of study
- Outstanding Questions
- Potential Actions

# Wildfire Risk Assessment - Overview

Scope: Focused on identifying wildfire risk to El Granada.

Objective:

Data driven analysis to identify areas of high risk, and develop a potential suite of actions to reduce the risk of wildfire reaching the community of El Granada

Approach - Steps:

1: Wildfire hazard characterization

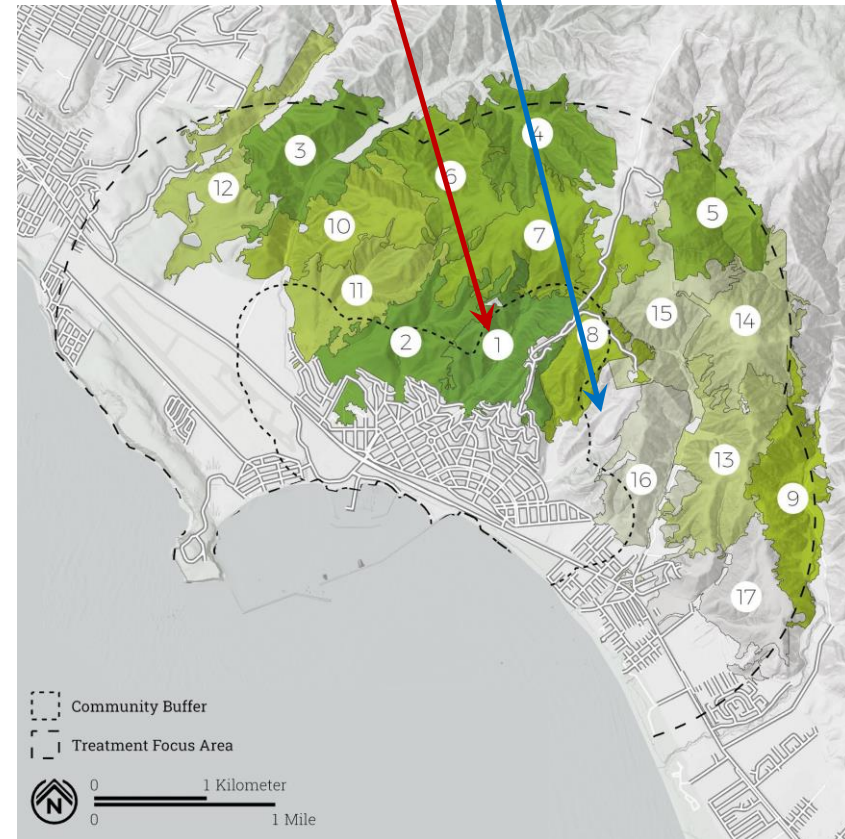
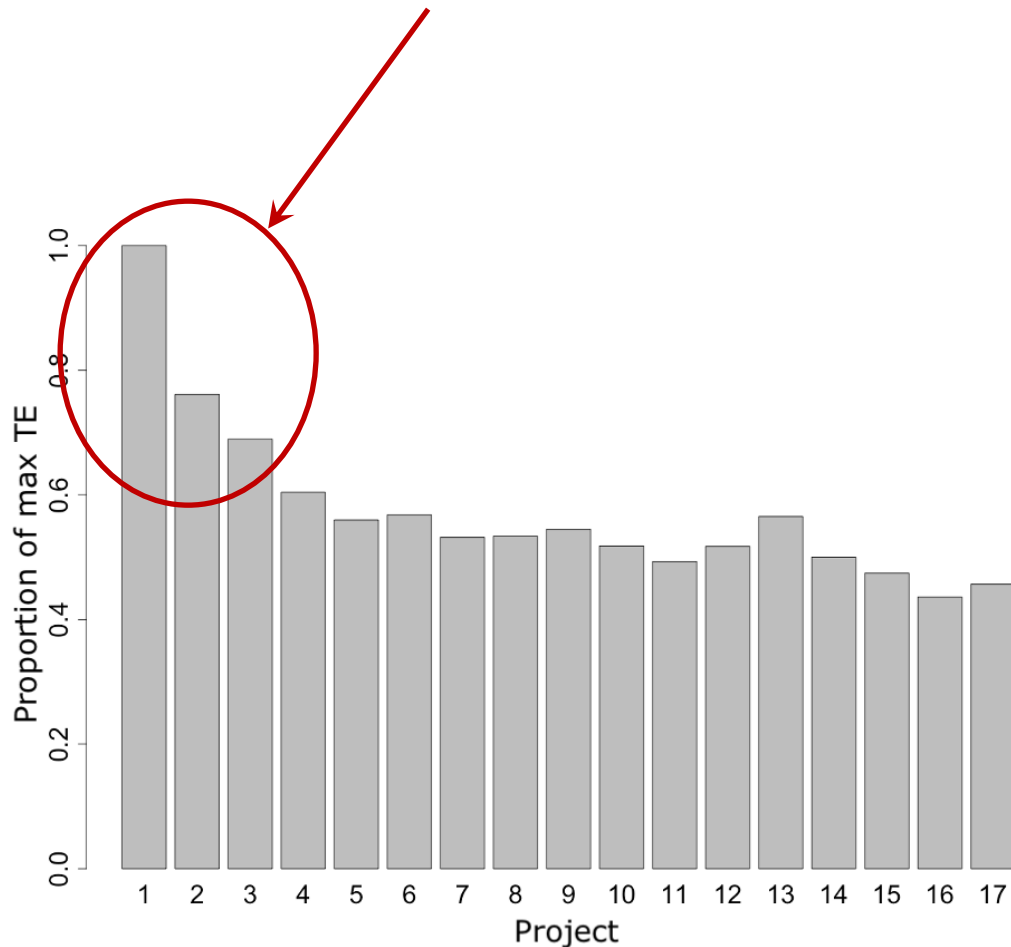
2: High Value Resources and Assets (HVRA) characterization

3 & 4: Risk Analysis/Treatment Effectiveness

- Exposure analysis – Where hazard has potential to occur near HVRA
- Effects analysis – How effective are vegetation treatments to reducing fire near HVRA
- Data refinements were made based on community input for: Vegetation Classifications, Weather Scenarios, & HVRA

# Key Findings

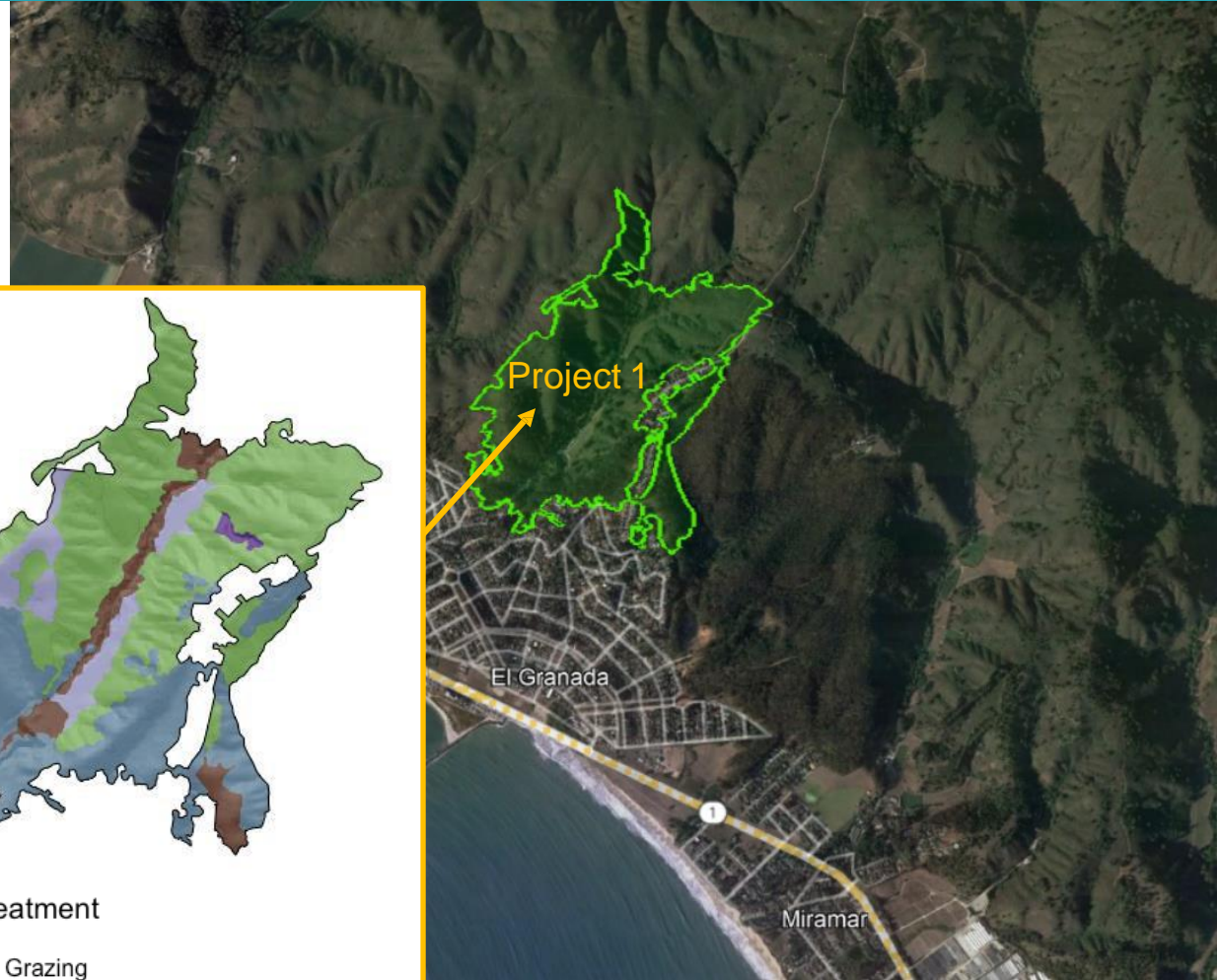
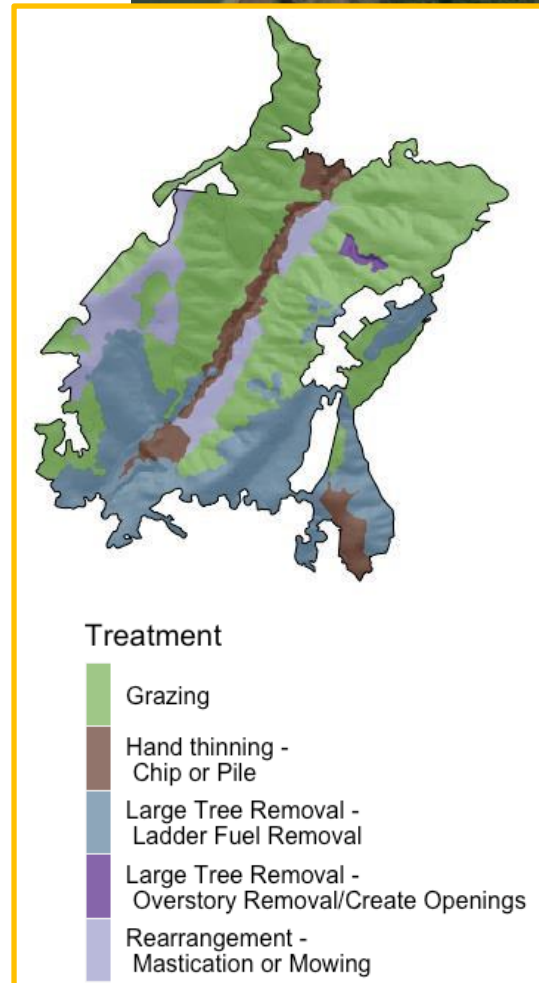
- 1: The most significant wildfire risk originates within Deer Creek Drainage (Zone 1)
- 2: The wildfire hazard within the center of Quarry Park is lower compared to other areas in the study area.
- 3: Projects 1, 2 and 3 are significantly more effective than all others.



# Project Implementation Uncertainties

Implementation planning may result in:

- Revised project boundaries
- Modified treatments
- Avoidance of environmentally sensitive areas



# Potential Fuel Reduction / Treatment Costs

- Treatment is a fraction of the projects' costs, must add:
  - Environmental compliance
  - Project management
  - Permitting
  - Ongoing maintenance costs
  - Grant procurement
  - Waste disposal
- Ballpark: High total x 3-4, PLUS grant writing
- Guess: \$60 million

Zone	Low	High
1	\$803,594	\$1,044,672
2	\$1,138,098	\$1,479,527
3	\$799,309	\$799,309
4	\$356,513	\$463,467
5	\$318,113	\$413,547
6	\$224,242	\$291,515
7	\$292,481	\$380,225
8	\$859,081	\$1,116,805
9	\$518,118	\$673,553
10	\$620,335	\$806,435
11	\$821,486	\$1,067,931
12	\$1,176,919	\$1,529,994
13	\$634,492	\$824,839
14	\$676,908	\$879,980
15	\$605,030	\$786,539
16	\$798,180	\$1,037,634
17	\$918,285	\$1,193,770
Total Treatment	\$9,326,641	\$14,789,742

# Potential Items for Further Research

1. Wind data near Quarry Park
2. Property ownership affecting treatment plans/projects
3. Modeling of fire damage in residential areas
4. Estimates of property loss damages
5. Estimates of time for fires to reach homes
6. Simulation of evacuation scenarios

# Discussion: Open Questions and Potential Actions

List of questions and potential actions posted on MCC website under today's agenda...